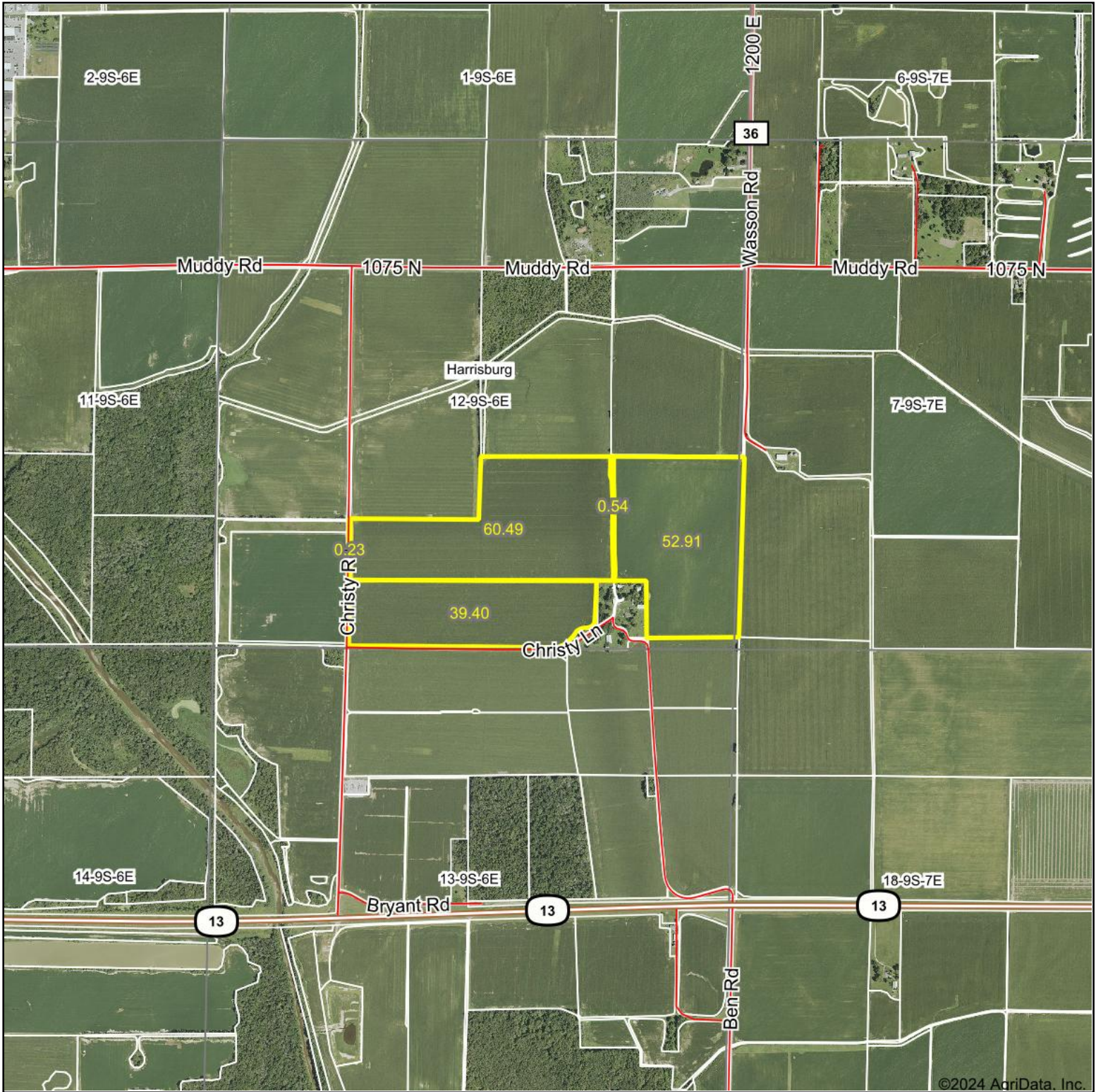
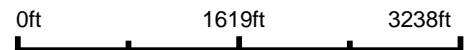


Aerial Map



©2024 AgriData, Inc.

Boundary Center: 37° 44' 55.66, -88° 29' 31.13



12-9S-6E
Saline County
Illinois

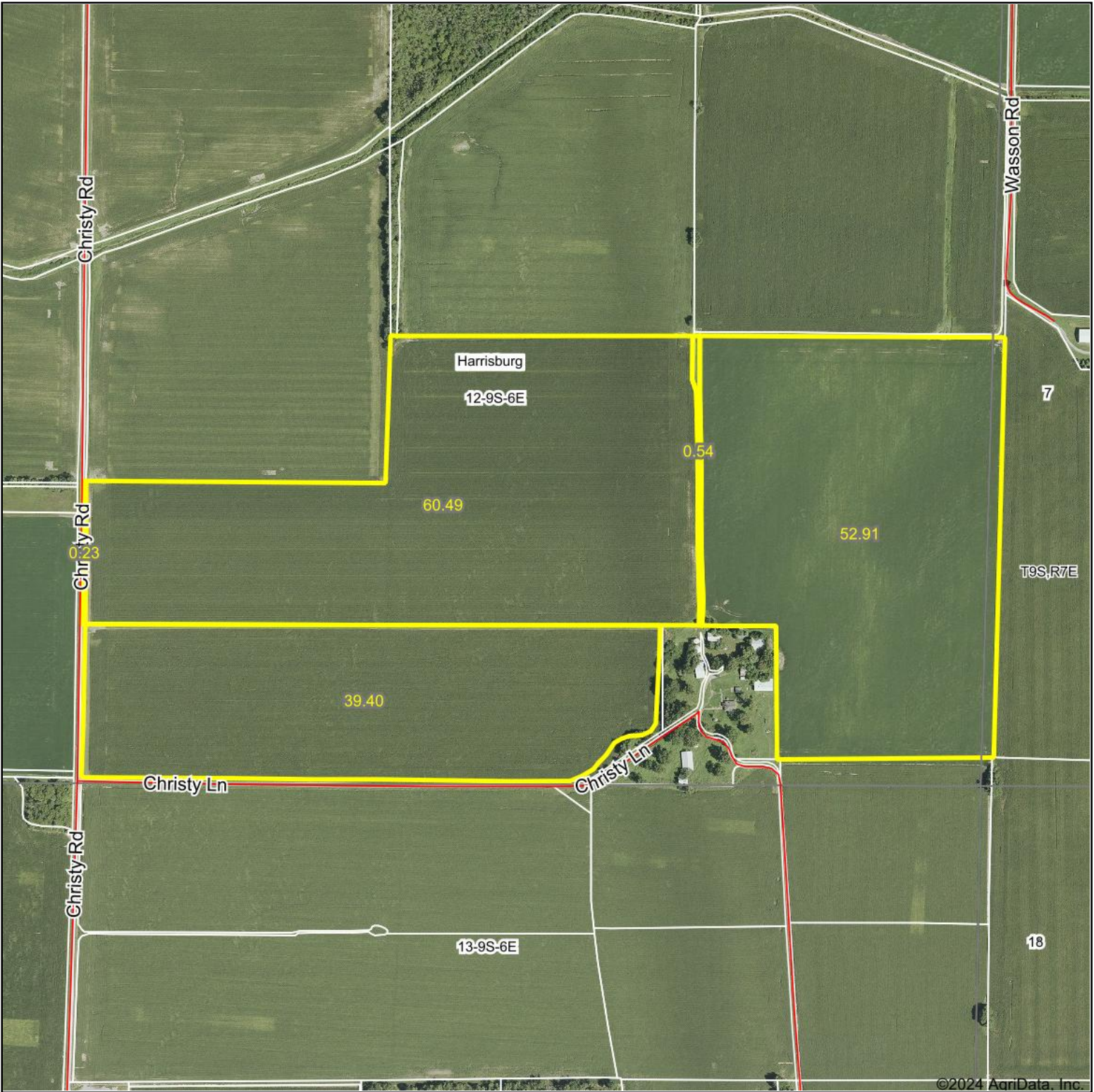


Maps Provided By:
surety
CUSTOMIZED ONLINE MAPPING
© AgriData, Inc. 2023 www.AgriDataInc.com

9/18/2024

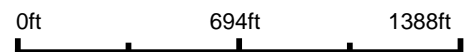
Field borders provided by Farm Service Agency as of 5/21/2008.

Aerial Map



©2024 AgriData, Inc.

Boundary Center: 37° 44' 55.66, -88° 29' 31.13



12-9S-6E
Saline County
Illinois



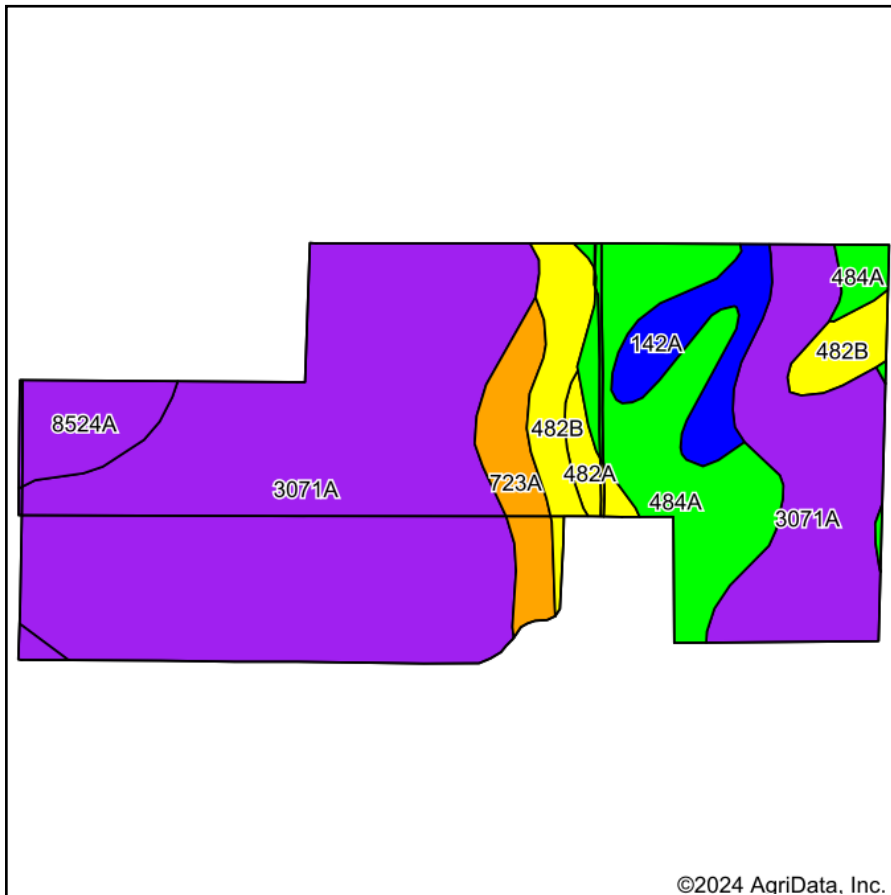
9/18/2024



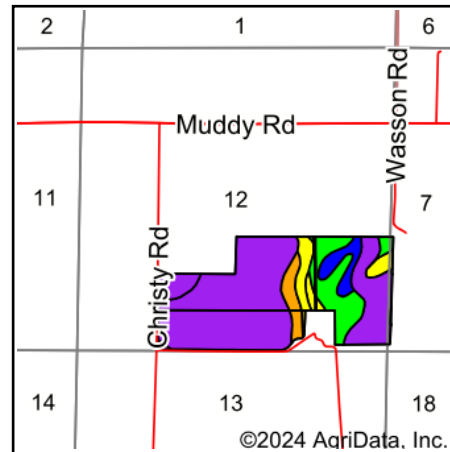
Maps Provided By:
surety
CUSTOMIZED ONLINE MAPPING
© AgriData, Inc. 2023 www.AgriDataInc.com

Field borders provided by Farm Service Agency as of 5/21/2008.

Soils Map



Soils data provided by USDA and NRCS.



State: **Illinois**
 County: **Saline**
 Location: **12-9S-6E**
 Township: **Harrisburg**
 Acres: **153.57**
 Date: **9/18/2024**



Area Symbol: IL165, Soil Area Version: 18

Code	Soil Description	Acres	Percent of field	Il. State Productivity Index Legend	Corn Bu/A	Soybeans Bu/A	Wheat Bu/A	Grass-legume e e hay, T/A	Crop productivity index for optimum management	*n NCCPI Soybeans
**3071A	Darwin silty clay, 0 to 2 percent slopes, frequently flooded	99.43	64.8%		**133	**45	**54	**4.00	**100	37
484A	Harco silt loam, 0 to 2 percent slopes	21.39	13.9%		190	61	74	5.60	140	83
**482B	Uniontown silt loam, 2 to 6 percent slopes	9.36	6.1%		**158	**50	**60	**4.70	**115	71
**142A	Patton silty clay loam, 0 to 2 percent slopes	7.50	4.9%		**178	**58	**68	**5.40	**132	65
723A	Reesville silt loam, 0 to 2 percent slopes	6.98	4.5%		170	55	66	6.10	124	80
**8524A	Zipp silty clay loam, 0 to 2 percent slopes, occasionally flooded	6.73	4.4%		**137	**46	**53	**4.30	**103	67
482A	Uniontown silt loam, 0 to 2 percent slopes	2.18	1.4%		161	51	61	4.80	117	73
Weighted Average					146.9	48.8	58.4	4.5	109.5	*n 50.6

Table: Optimum Crop Productivity Ratings for Illinois Soil EFOTG are sourced from Bulletin 811 calculated Map Unit Base Yield Indices, and adjusted (Adj) for slope, erosion, flooding, and surface texture. Publication Date: 02-08-2023

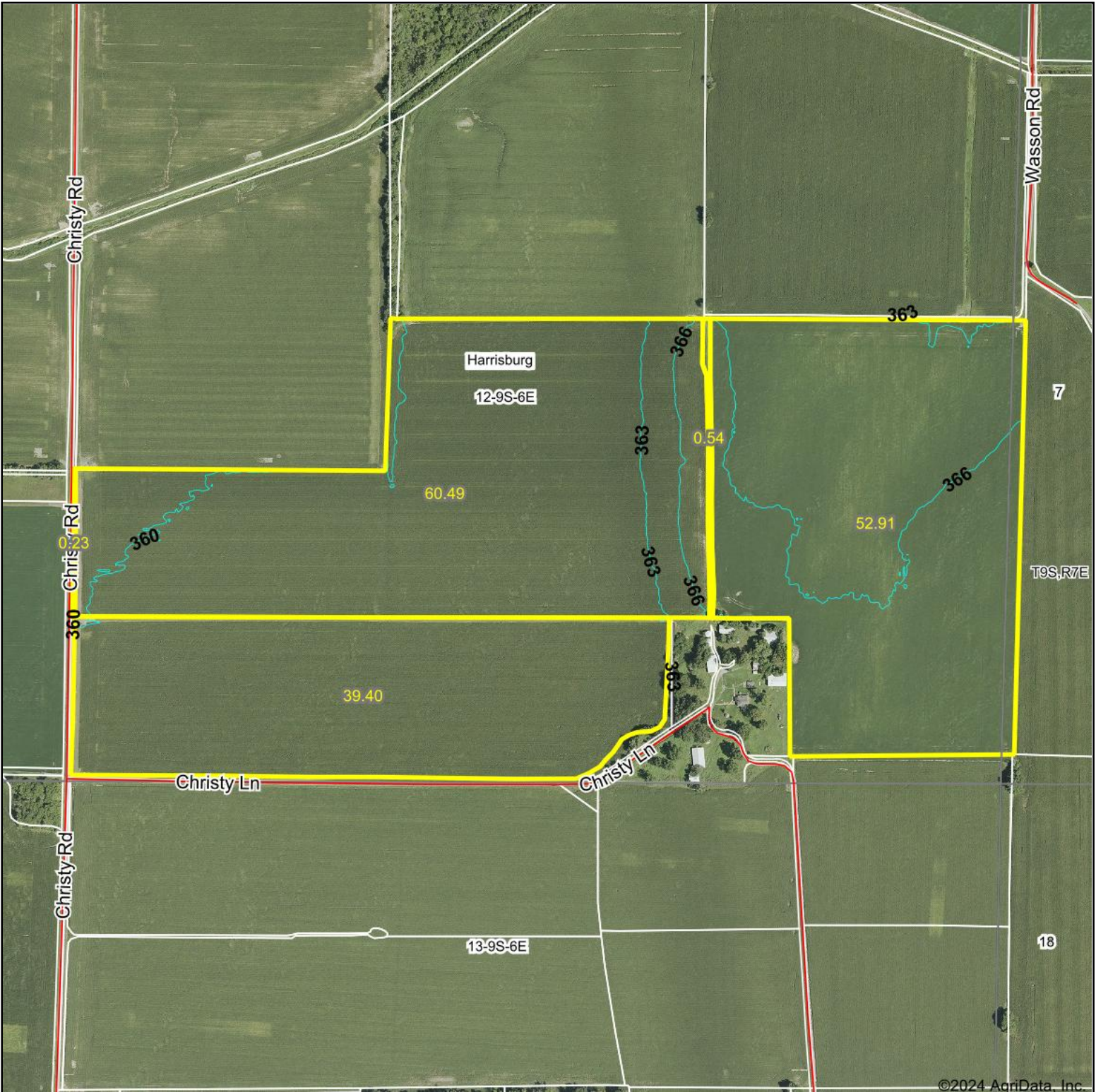
Crop yields and productivity (B811 EFOTG) are maintained at the following USDA web site: 2023 Illinois Soil Productivity and Yield Indices: <https://efotg.sc.egov.usda.gov/#/state/IL/documents/section=2&folder=52809>

** Base indexes from Bulletin 811 adjusted for slope, erosion, flooding, and surface texture according to the Il. Soils EFOTG

e Soils in the well drained group were not rated for grass-legume and are shown with a zero "0".

*n: The aggregation method is "Weighted Average using all components"

Topography Contours

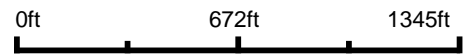


Maps Provided By:



© AgriData, Inc. 2023 www.AgriDataInc.com

Source: USGS 3 meter dem
 Interval(ft): 3.0
 Min: 356.3
 Max: 369.4
 Range: 13.1
 Average: 363.1
 Standard Deviation: 2.59 ft

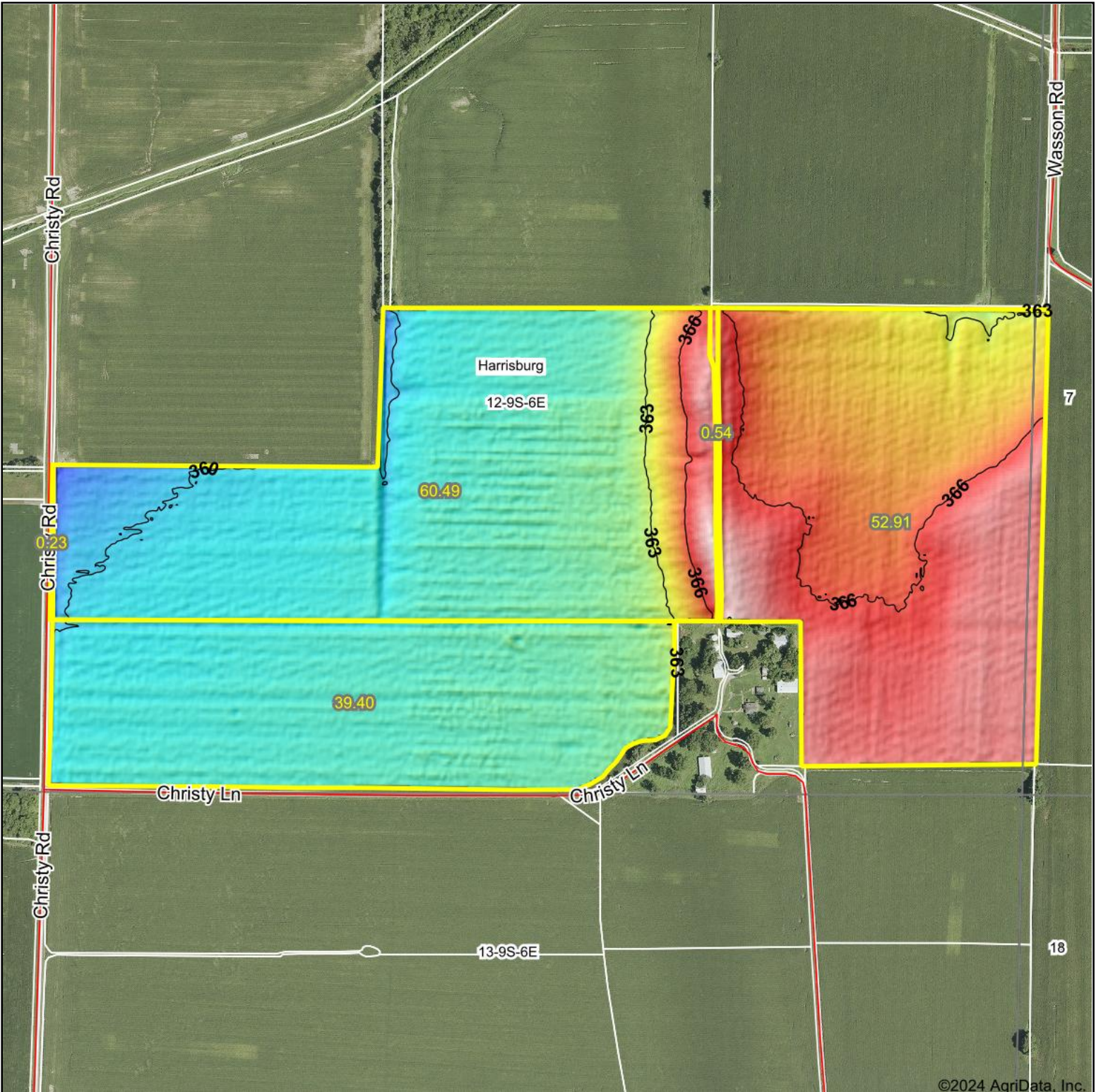


9/18/2024

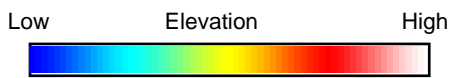
12-9S-6E
 Saline County
 Illinois

Boundary Center: 37° 44' 55.66, -88° 29' 31.13

Topography Hillshade



©2024 AgriData, Inc.



Source: USGS 3 meter dem
 Interval(ft): 3
 Min: 356.3
 Max: 369.4
 Range: 13.1
 Average: 363.1
 Standard Deviation: 2.59 ft



12-9S-6E
Saline County
Illinois

Boundary Center: 37° 44' 55.66, -88° 29' 31.13



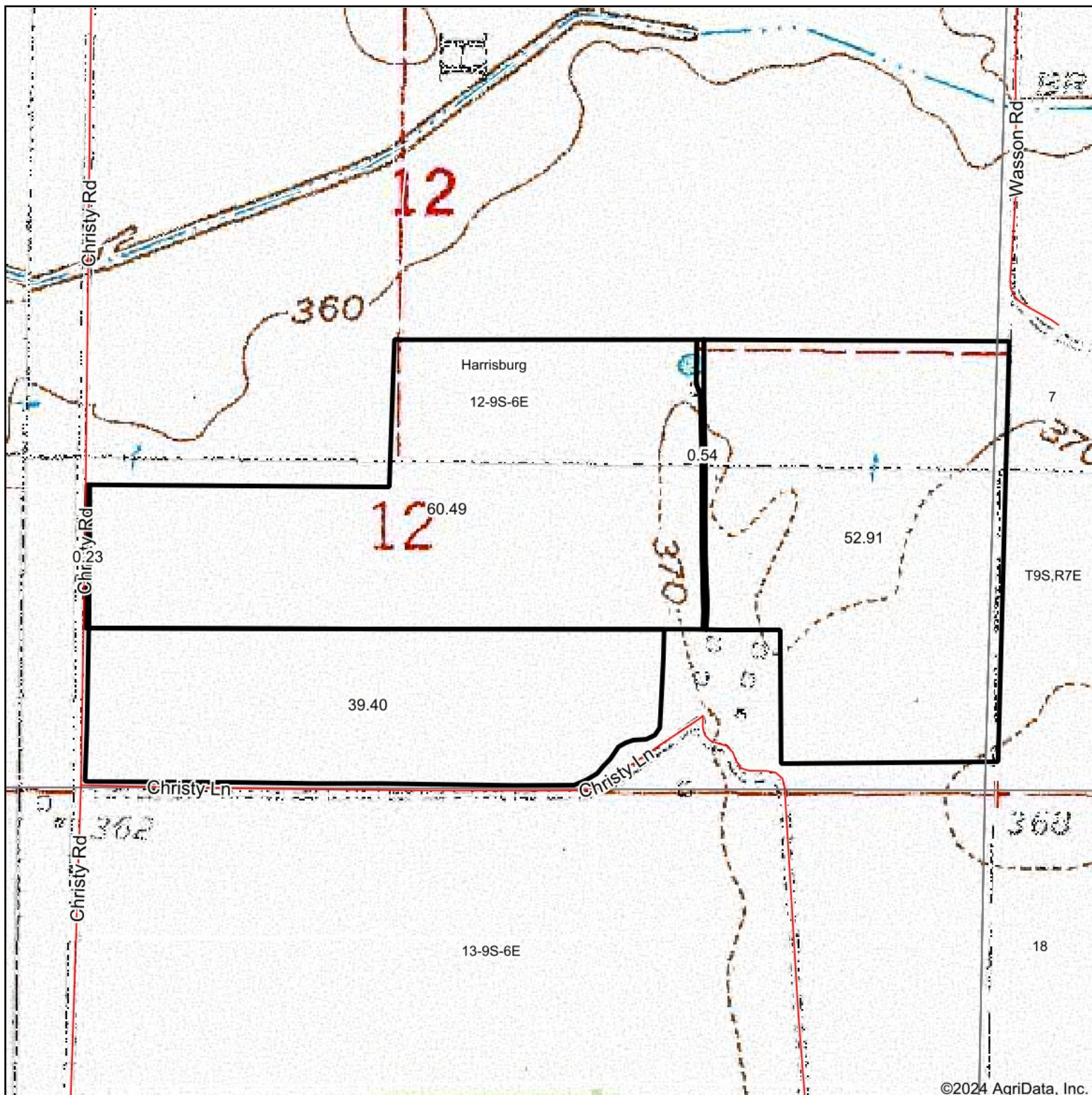
Maps Provided By:



© AgriData, Inc. 2023 www.AgriDataInc.com

Field borders provided by Farm Service Agency as of 5/21/2008.

Topography Map



Map Center: 37° 44' 56.13, -88° 29' 30.91



Maps Provided By:



© AgriData, Inc. 2023

www.AgriDataInc.com

12-9S-6E
Saline County
Illinois



9/18/2024