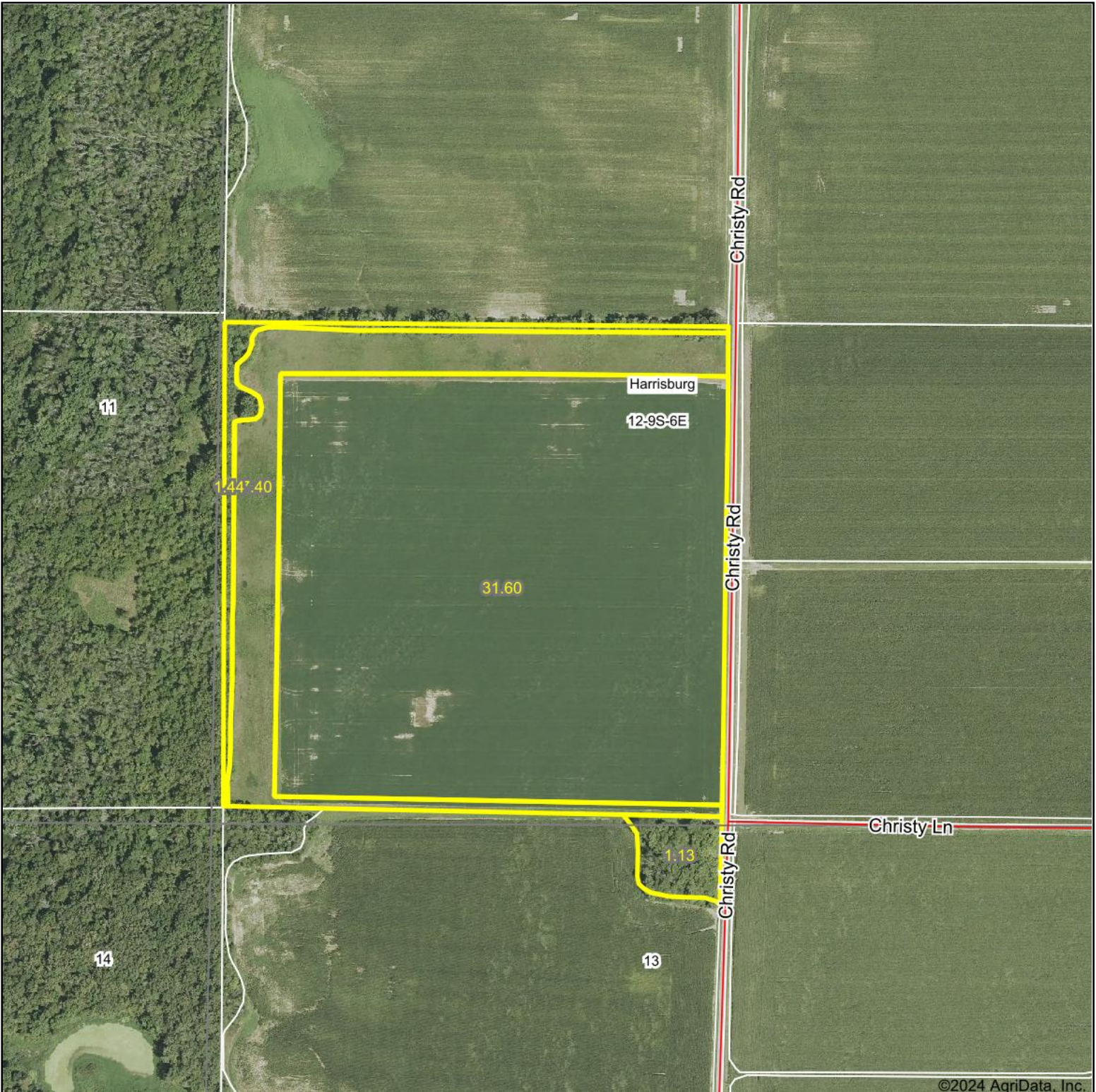


# Aerial Map



Boundary Center: 37° 44' 50.95, -88° 30' 5.36



**12-9S-6E**  
**Saline County**  
**Illinois**



9/18/2024



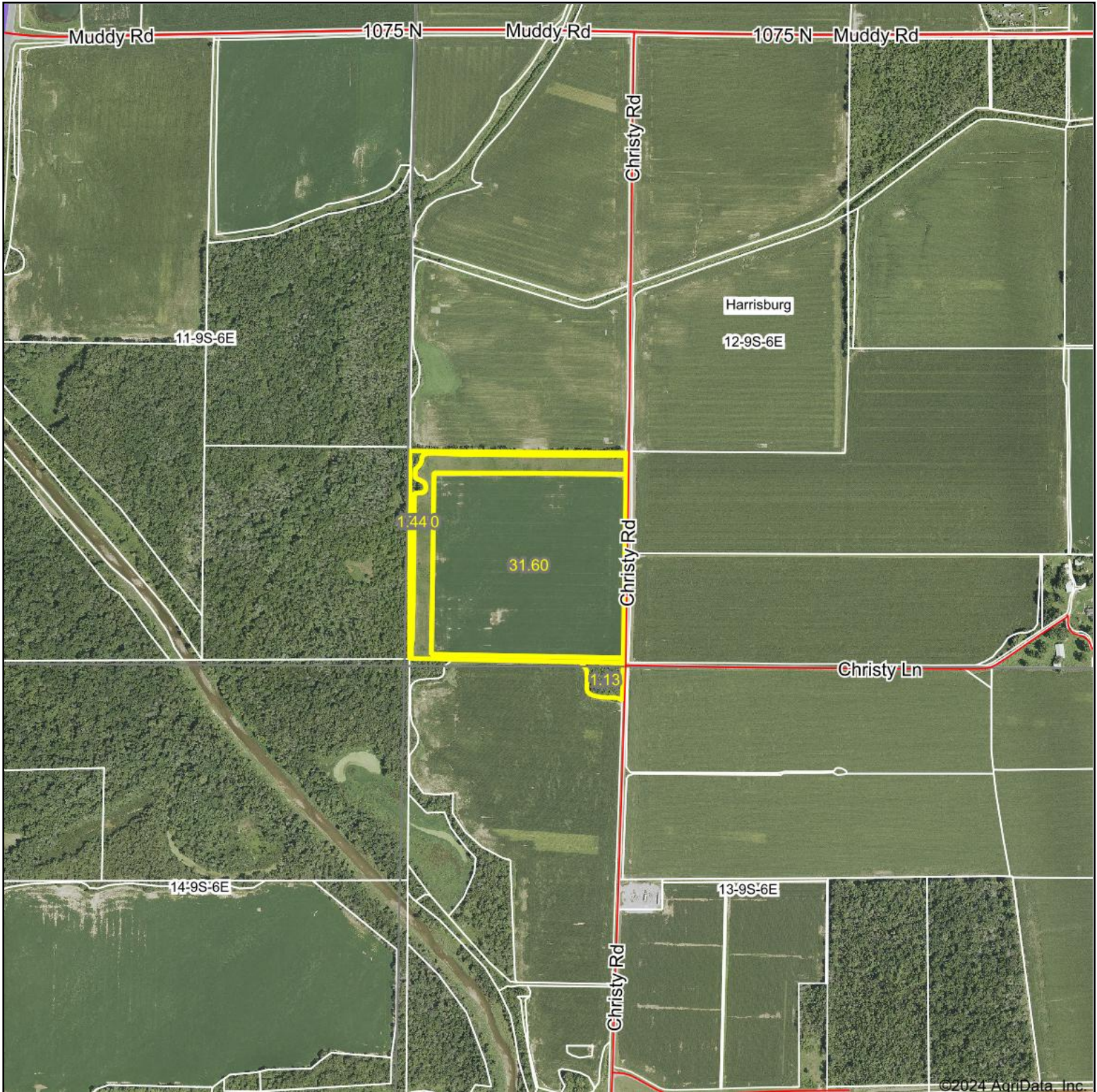
Maps Provided By:



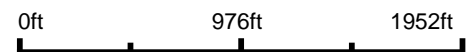
© AgriData, Inc. 2023 www.AgriDataInc.com

Field borders provided by Farm Service Agency as of 5/21/2008.

# Aerial Map



Boundary Center: 37° 44' 50.95, -88° 30' 5.36



**12-9S-6E**  
**Saline County**  
**Illinois**

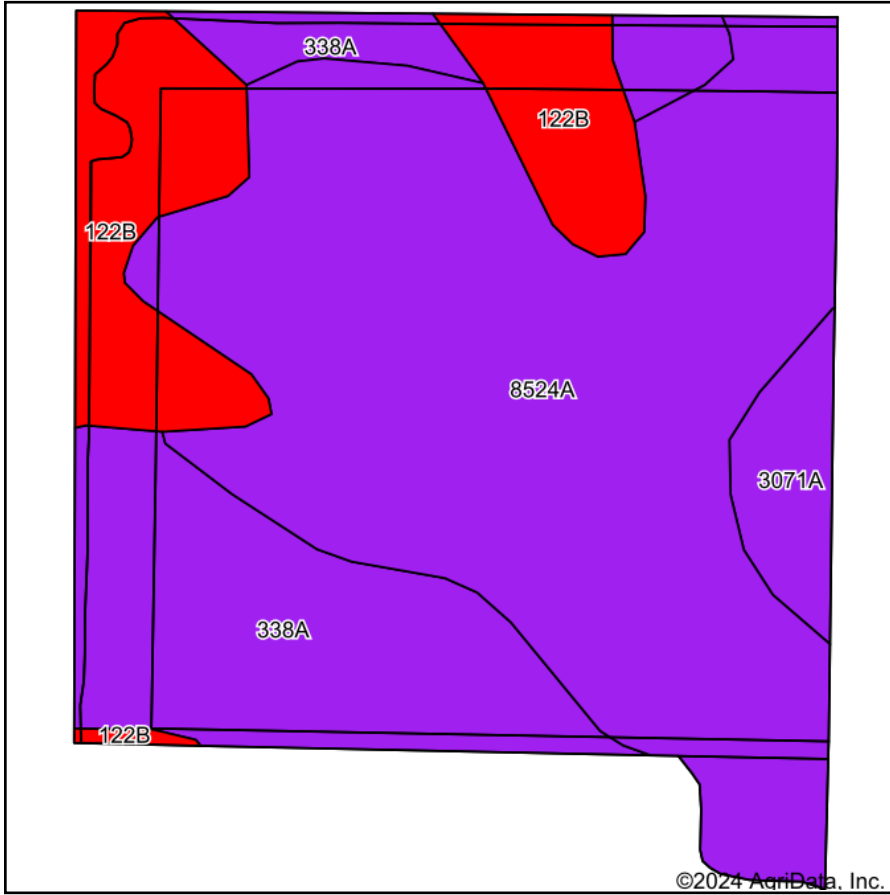


Maps Provided By:  
**surety**  
CUSTOMIZED ONLINE MAPPING  
© AgriData, Inc. 2023 www.AgriDataInc.com

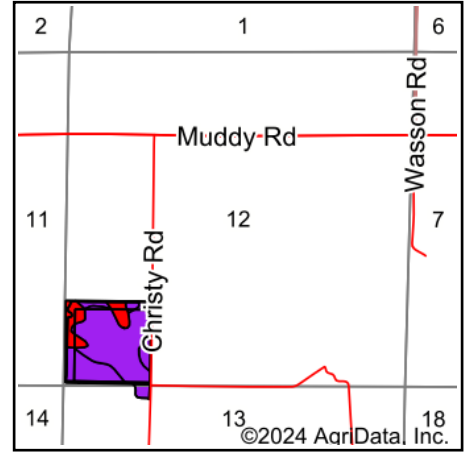
9/18/2024

Field borders provided by Farm Service Agency as of 5/21/2008.

# Soils Map



Soils data provided by USDA and NRCS.



State: **Illinois**  
 County: **Saline**  
 Location: **12-9S-6E**  
 Township: **Harrisburg**  
 Acres: **41.57**  
 Date: **9/18/2024**



Area Symbol: IL165, Soil Area Version: 18

Code	Soil Description	Acres	Percent of field	Il. State Productivity Index Legend	Corn Bu/A	Soybeans Bu/A	Wheat Bu/A	Grass-legume e e hay, T/A	Crop productivity index for optimum management	*n NCCPI Soybeans
**8524A	Zipp silty clay loam, 0 to 2 percent slopes, occasionally flooded	24.32	58.5%		**137	**46	**53	**4.30	**103	67
338A	Hurst silt loam, 0 to 2 percent slopes	9.35	22.5%		134	44	55	4.10	100	55
**122B	Colp silt loam, 2 to 5 percent slopes	6.24	15.0%		**131	**41	**55	**4.20	**96	57
**3071A	Darwin silty clay, 0 to 2 percent slopes, frequently flooded	1.66	4.0%		**133	**45	**54	**4.00	**100	37
<b>Weighted Average</b>					<b>135.3</b>	<b>44.8</b>	<b>53.8</b>	<b>4.2</b>	<b>101.2</b>	<b>*n 61.6</b>

**Table: Optimum Crop Productivity Ratings for Illinois Soil EFOTG are sourced from Bulletin 811 calculated Map Unit Base Yield Indices, and adjusted (Adj) for slope, erosion, flooding, and surface texture.** Publication Date: 02-08-2023

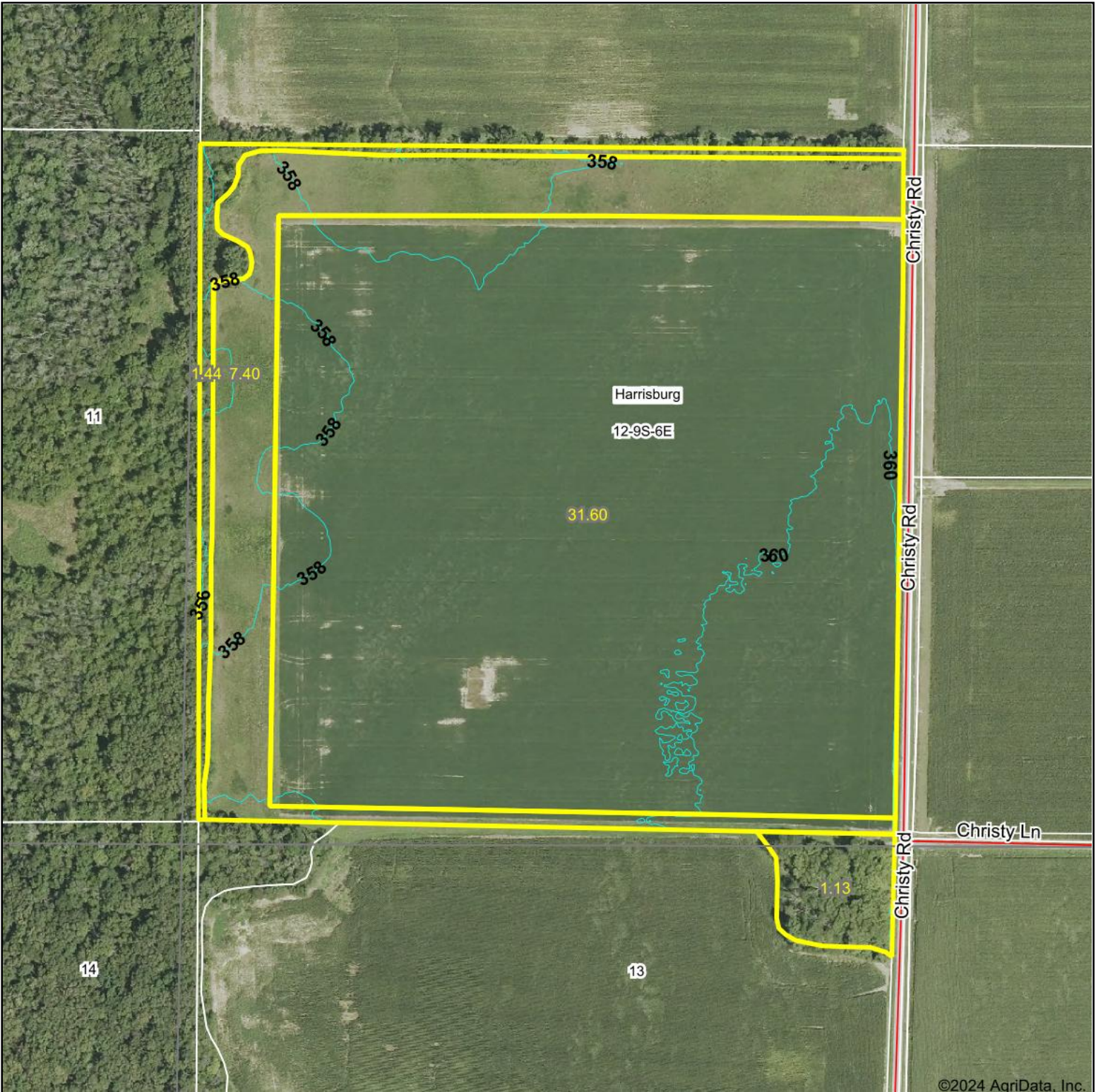
Crop yields and productivity (B811 EFOTG) are maintained at the following USDA web site: 2023 Illinois Soil Productivity and Yield Indices: <https://efotg.sc.egov.usda.gov/#/state/IL/documents/section=2&folder=52809>

\*\* Base indexes from Bulletin 811 adjusted for slope, erosion, flooding, and surface texture according to the Il. Soils EFOTG

e Soils in the well drained group were not rated for grass-legume and are shown with a zero "0".

\*n: The aggregation method is "Weighted Average using all components"

# Topography Contours



©2024 AgriData, Inc.

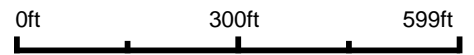


Maps Provided By:



© AgriData, Inc. 2023 www.AgriDataInc.com

Source: USGS 1 meter dem  
 Interval(ft): 2.0  
 Min: 354.7  
 Max: 362.0  
 Range: 7.3  
 Average: 359.1  
 Standard Deviation: 0.98 ft



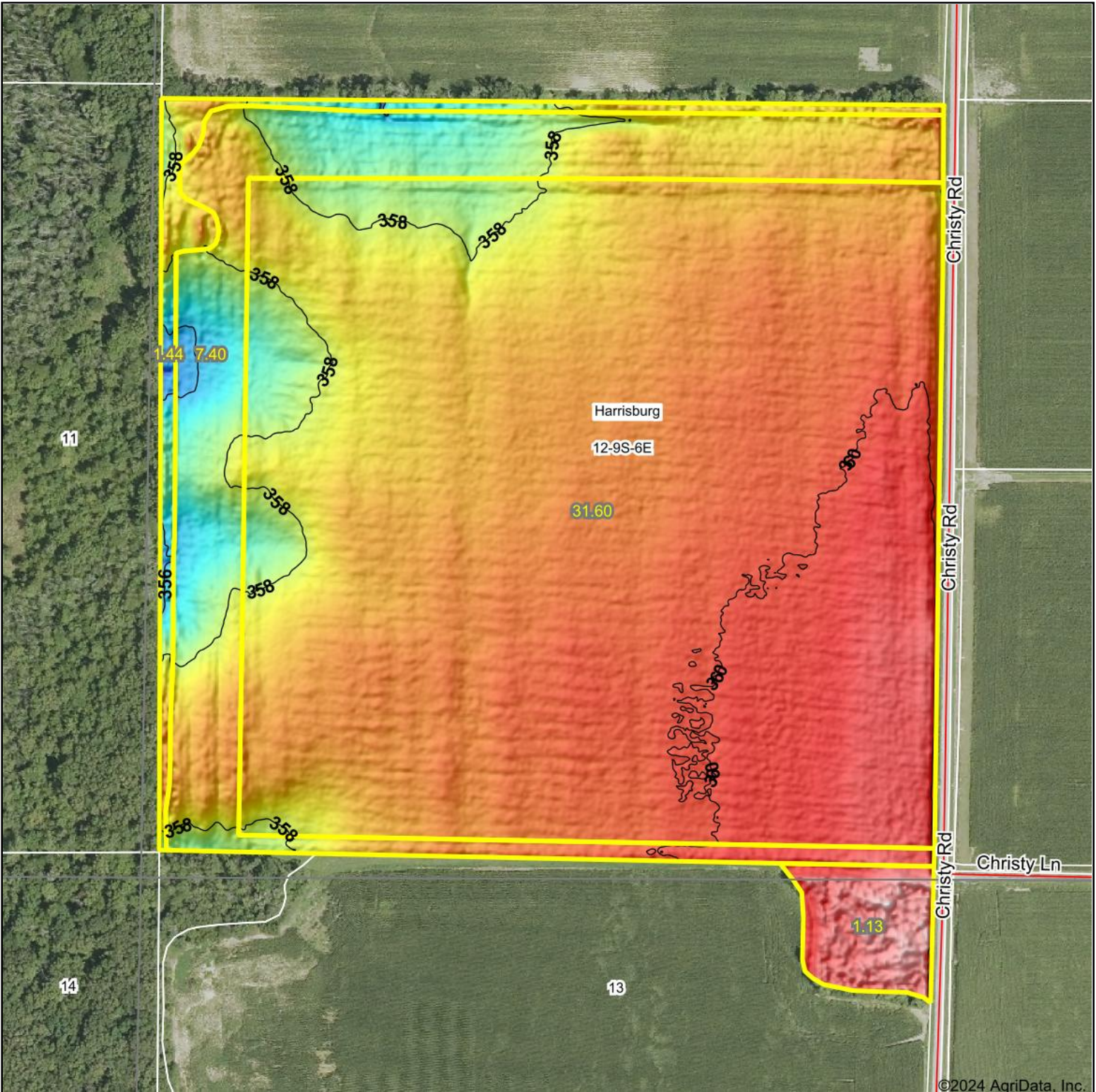
9/18/2024

**12-9S-6E**  
**Saline County**  
**Illinois**

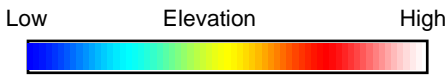
Boundary Center: 37° 44' 50.95, -88° 30' 5.36

Field borders provided by Farm Service Agency as of 5/21/2008.

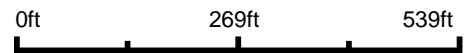
# Topography Hillshade



©2024 AgriData, Inc.



Source: USGS 1 meter dem  
 Interval(ft): 2  
 Min: 354.7  
 Max: 362.0  
 Range: 7.3  
 Average: 359.1  
 Standard Deviation: 0.98 ft



**12-9S-6E**  
**Saline County**  
**Illinois**

Boundary Center: 37° 44' 50.95, -88° 30' 5.36



Maps Provided By:



© AgriData, Inc. 2023 www.AgriDataInc.com

Field borders provided by Farm Service Agency as of 5/21/2008.