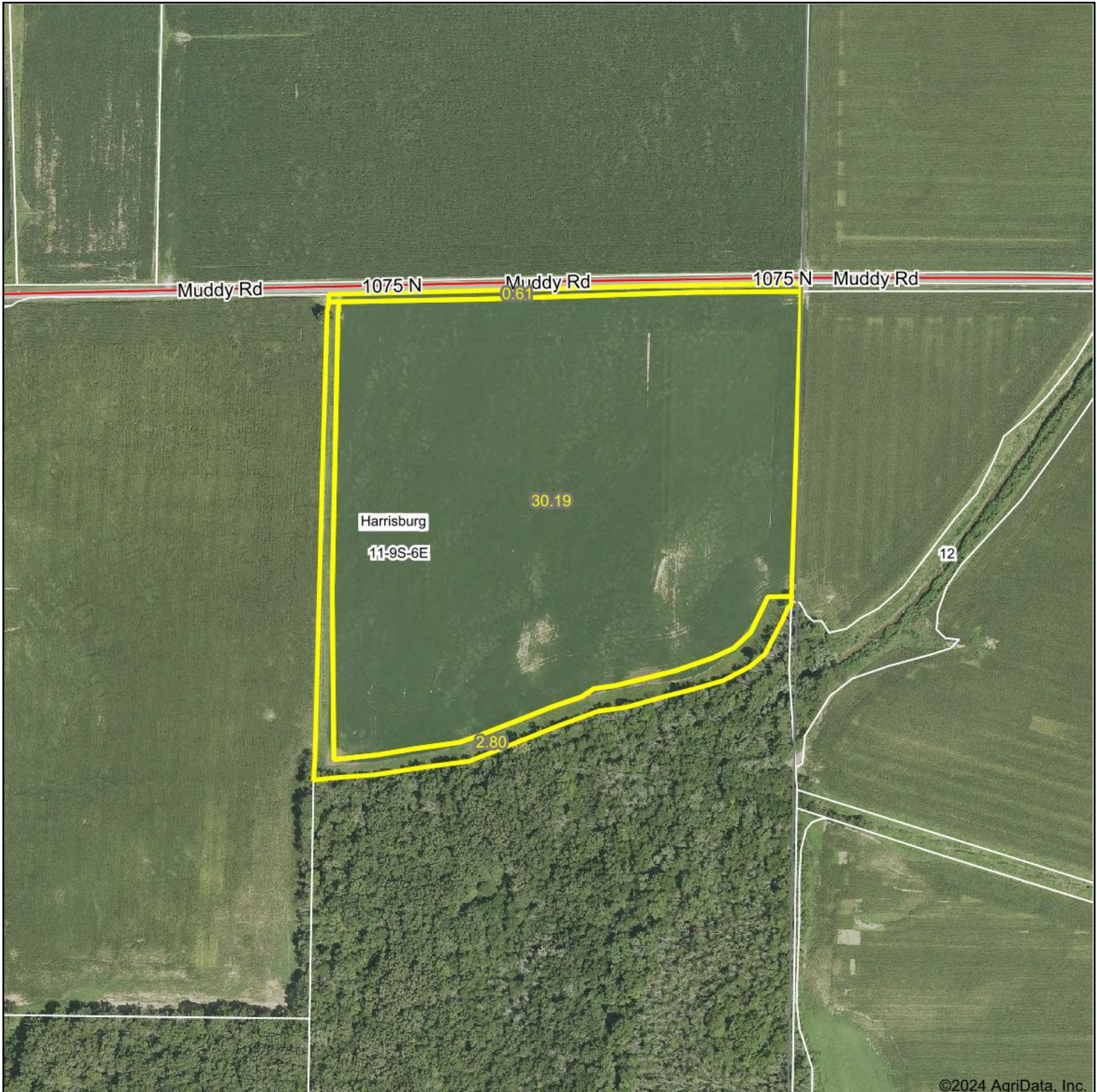


Aerial Map



©2024 AgriData, Inc.

Boundary Center: 37° 45' 17.85, -88° 30' 21.91



11-9S-6E
Saline County
Illinois



9/18/2024



Maps Provided By:



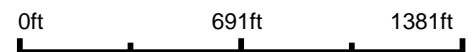
© AgriData, Inc. 2023 www.AgriDataInc.com

Field borders provided by Farm Service Agency as of 5/21/2008.

Aerial Map



Boundary Center: 37° 45' 17.53, -88° 30' 21.92



11-9S-6E
Saline County
Illinois



Maps Provided By:

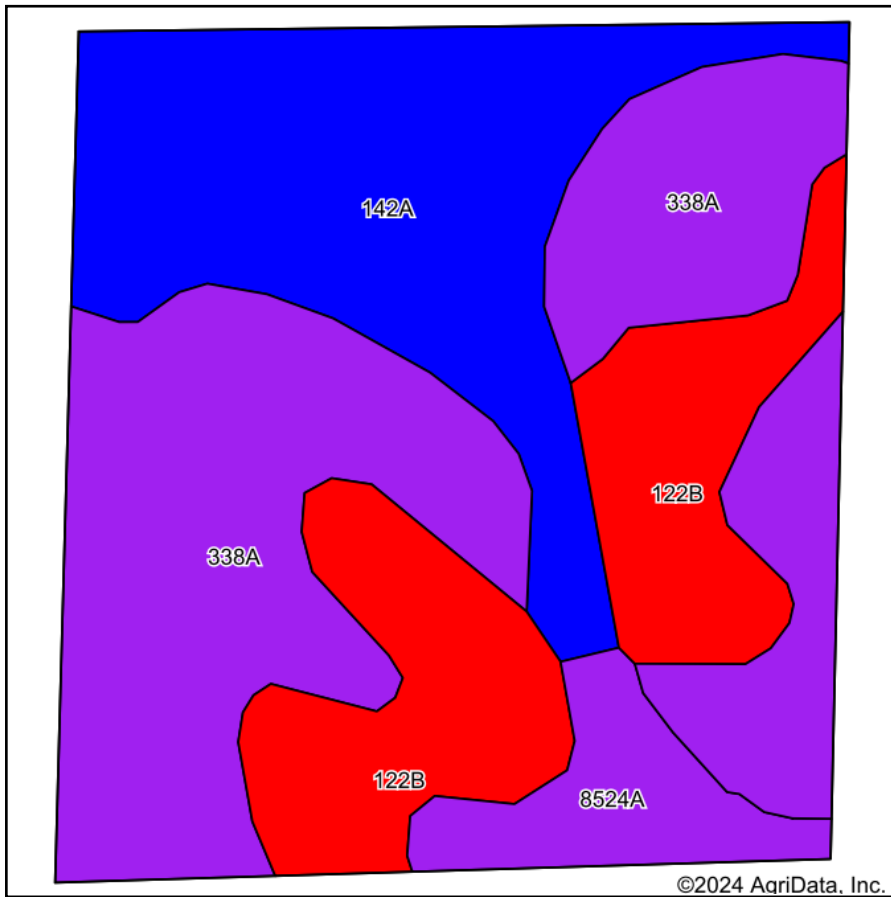


© AgriData, Inc. 2023 www.AgriDataInc.com

9/18/2024

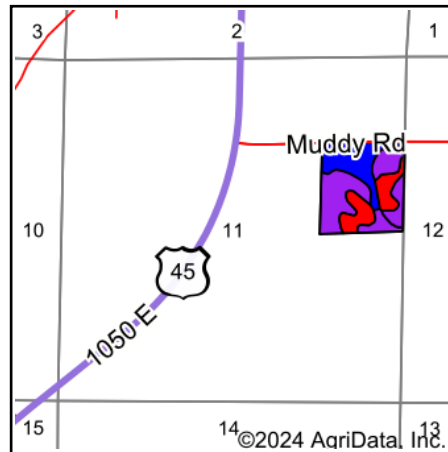
Field borders provided by Farm Service Agency as of 5/21/2008.

Soils Map



Soils data provided by USDA and NRCS.

©2024 AgriData, Inc.



State: **Illinois**
 County: **Saline**
 Location: **11-9S-6E**
 Township: **Harrisburg**
 Acres: **40.09**
 Date: **9/18/2024**



Area Symbol: IL165, Soil Area Version: 18

Code	Soil Description	Acres	Percent of field	Il. State Productivity Index Legend	Corn Bu/A	Soybeans Bu/A	Wheat Bu/A	Grass-legume hay, T/A	Crop productivity index for optimum management	*n NCCPI Soybeans
338A	Hurst silt loam, 0 to 2 percent slopes	17.52	43.7%		134	44	55	4.10	100	55
**142A	Patton silty clay loam, 0 to 2 percent slopes	11.35	28.3%		**178	**58	**68	**5.40	**132	65
**122B	Colp silt loam, 2 to 5 percent slopes	8.62	21.5%		**131	**41	**55	**4.20	**96	57
**8524A	Zipp silty clay loam, 0 to 2 percent slopes, occasionally flooded	2.60	6.5%		**137	**46	**53	**4.30	**103	67
Weighted Average					146	47.4	58.6	4.5	108.4	*n 59

Table: Optimum Crop Productivity Ratings for Illinois Soil EFOTG are sourced from Bulletin 811 calculated Map Unit Base Yield Indices, and adjusted (Adj) for slope, erosion, flooding, and surface texture. Publication Date: 02-08-2023

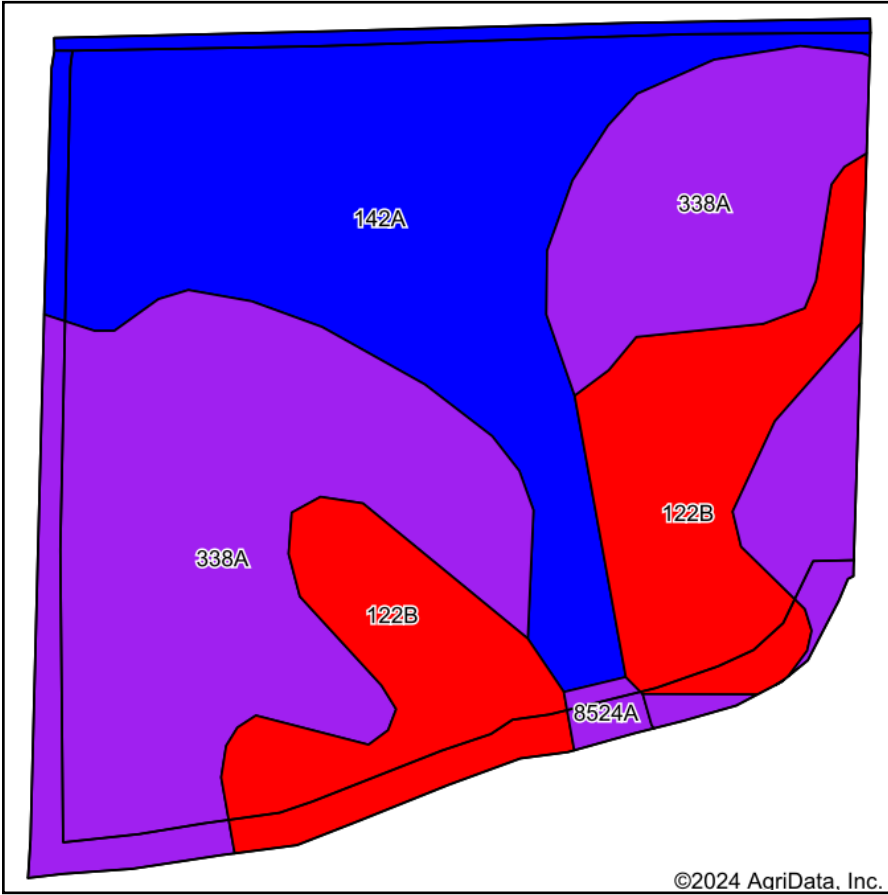
Crop yields and productivity (B811 EFOTG) are maintained at the following USDA web site: 2023 Illinois Soil Productivity and Yield Indices: <https://efotg.sc.egov.usda.gov/#/state/IL/documents/section=2&folder=52809>

** Base indexes from Bulletin 811 adjusted for slope, erosion, flooding, and surface texture according to the Il. Soils EFOTG

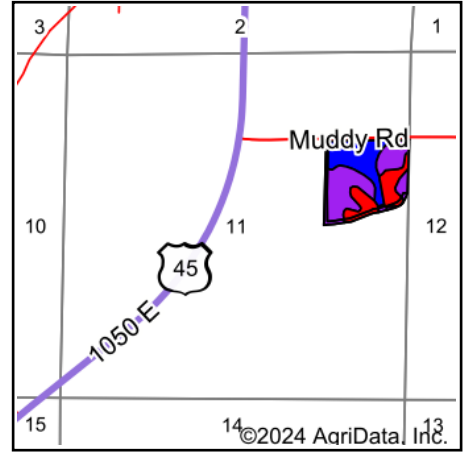
e Soils in the well drained group were not rated for grass-legume and are shown with a zero "0".

*n: The aggregation method is "Weighted Average using all components"

Soils Map



Soils data provided by USDA and NRCS.



State: **Illinois**
 County: **Saline**
 Location: **11-9S-6E**
 Township: **Harrisburg**
 Acres: **33.6**
 Date: **9/18/2024**



Area Symbol: IL165, Soil Area Version: 18

Code	Soil Description	Acres	Percent of field	Il. State Productivity Index Legend	Corn Bu/A	Soybeans Bu/A	Wheat Bu/A	Grass-legume hay, T/A	Crop productivity index for optimum management	*n NCCPI Soybeans
338A	Hurst silt loam, 0 to 2 percent slopes	15.23	45.3%		134	44	55	4.10	100	55
**142A	Patton silty clay loam, 0 to 2 percent slopes	10.85	32.3%		**178	**58	**68	**5.40	**132	65
**122B	Colp silt loam, 2 to 5 percent slopes	7.28	21.7%		**131	**41	**55	**4.20	**96	57
**8524A	Zipp silty clay loam, 0 to 2 percent slopes, occasionally flooded	0.24	0.7%		**137	**46	**53	**4.30	**103	67
Weighted Average					147.6	47.9	59.2	4.5	109.5	*n 58.7

Table: Optimum Crop Productivity Ratings for Illinois Soil EFOTG are sourced from Bulletin 811 calculated Map Unit Base Yield Indices, and adjusted (Adj) for slope, erosion, flooding, and surface texture. Publication Date: 02-08-2023

Crop yields and productivity (B811 EFOTG) are maintained at the following USDA web site: 2023 Illinois Soil Productivity and Yield Indices: <https://efotg.sc.egov.usda.gov/#/state/IL/documents/section=2&folder=52809>

** Base indexes from Bulletin 811 adjusted for slope, erosion, flooding, and surface texture according to the Il. Soils EFOTG

e Soils in the well drained group were not rated for grass-legume and are shown with a zero "0".

*n: The aggregation method is "Weighted Average using all components"

Topography Contours



©2024 AgriData, Inc.



Maps Provided By:



© AgriData, Inc. 2023

www.AgridataInc.com

Field borders provided by Farm Service Agency as of 5/21/2008.

Source: USGS 1 meter dem

Interval(ft): 2.0

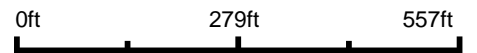
Min: 340.0

Max: 361.9

Range: 21.9

Average: 358.9

Standard Deviation: 2.85 ft

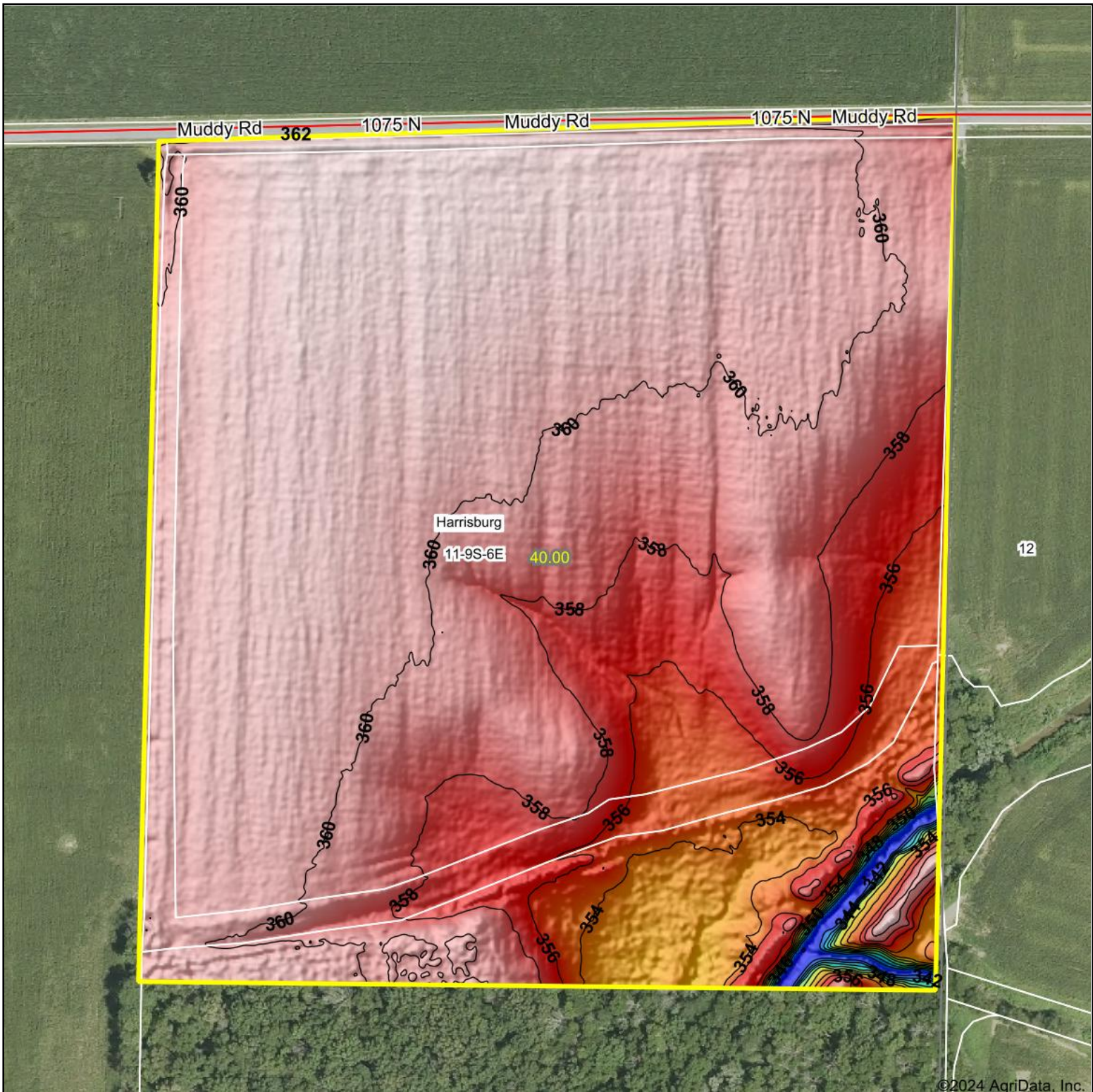


9/18/2024

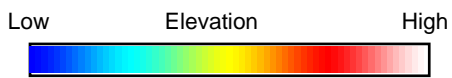
11-9S-6E
Saline County
Illinois

Boundary Center: 37° 45' 17.69, -88° 30' 21.93

Topography Hillshade



©2024 AgriData, Inc.



Source: USGS 1 meter dem



Interval(ft): 2

Min: 340.0

Max: 361.9

Range: 21.9

Average: 358.9

Standard Deviation: 2.85 ft



9/18/2024

11-9S-6E
Saline County
Illinois

Boundary Center: 37° 45' 17.69, -88° 30' 21.93



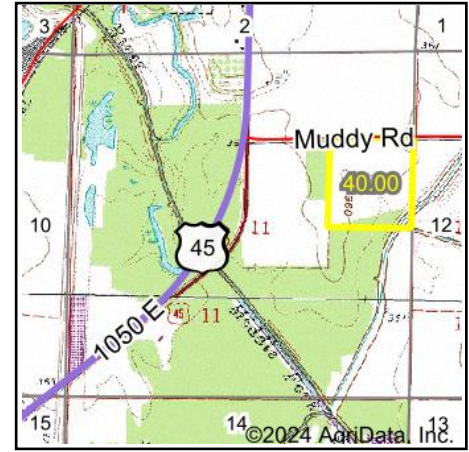
Maps Provided By:



© AgriData, Inc. 2023 www.AgriDataInc.com

Field borders provided by Farm Service Agency as of 5/21/2008.

Wetlands Map



State: **Illinois**
 Location: **11-9S-6E**
 County: **Saline**
 Township: **Harrisburg**
 Date: **9/18/2024**



Maps Provided By:



© AgriData, Inc. 2023 www.AgriDataInc.com



0ft 405ft 810ft

Classification Code	Type	Acres
PFO1A	Freshwater Forested/Shrub Wetland	2.90
R2UBHx	Riverine	0.03
Total Acres		2.93

Data Source: National Wetlands Inventory website. U.S. DoI, Fish and Wildlife Service, Washington, D.C. <http://www.fws.gov/wetlands/>