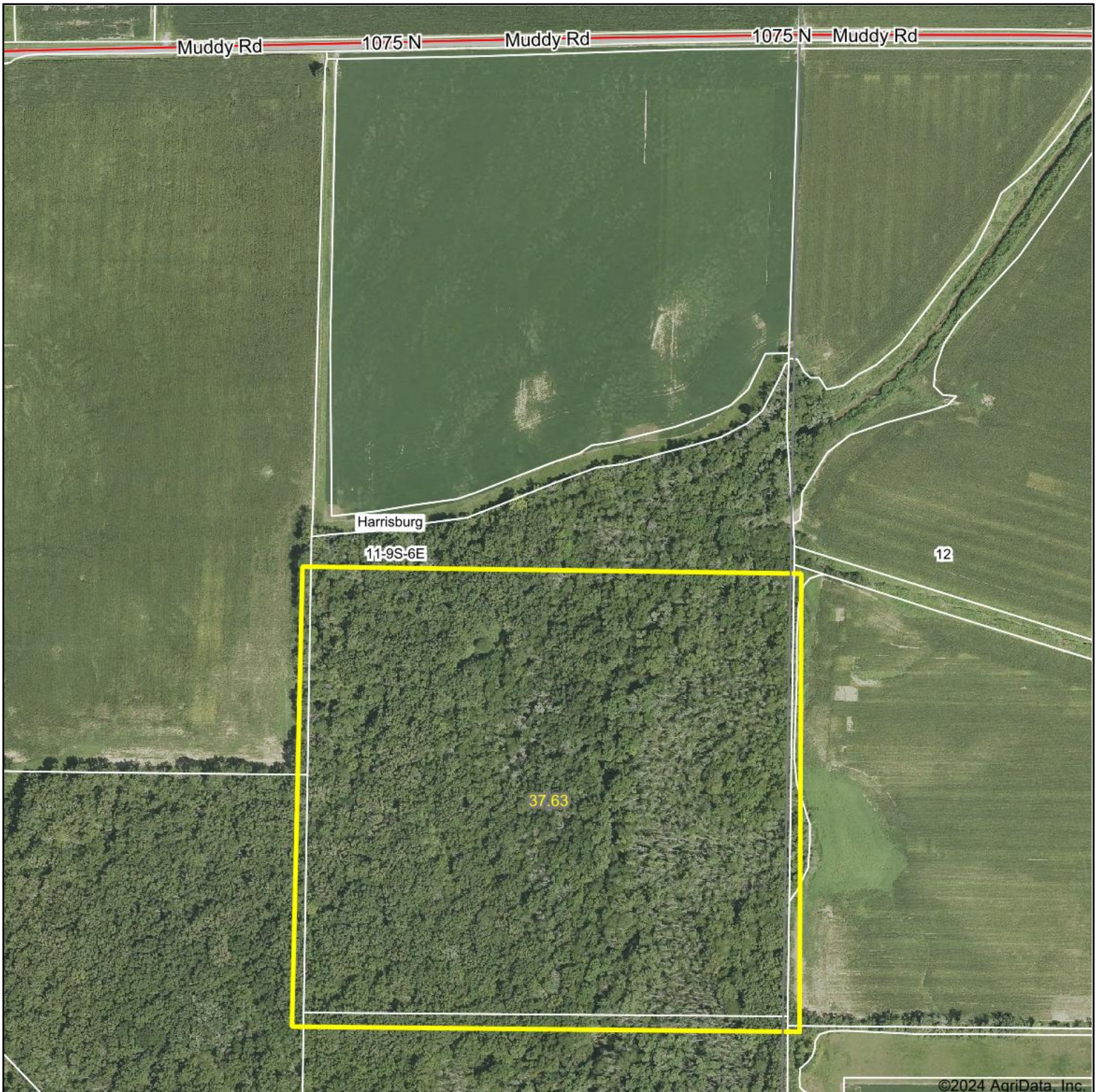


Aerial Map



©2024 AgriData, Inc.

Boundary Center: 37° 45' 4.37, -88° 30' 21.82



11-9S-6E
Saline County
Illinois



9/18/2024



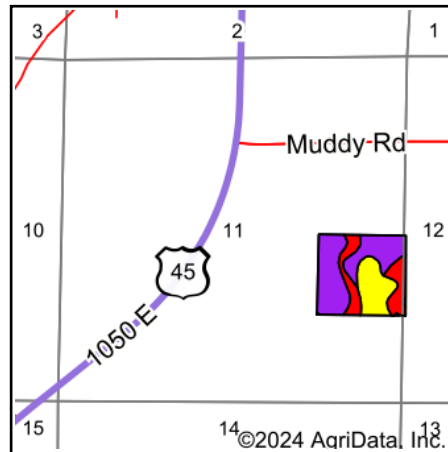
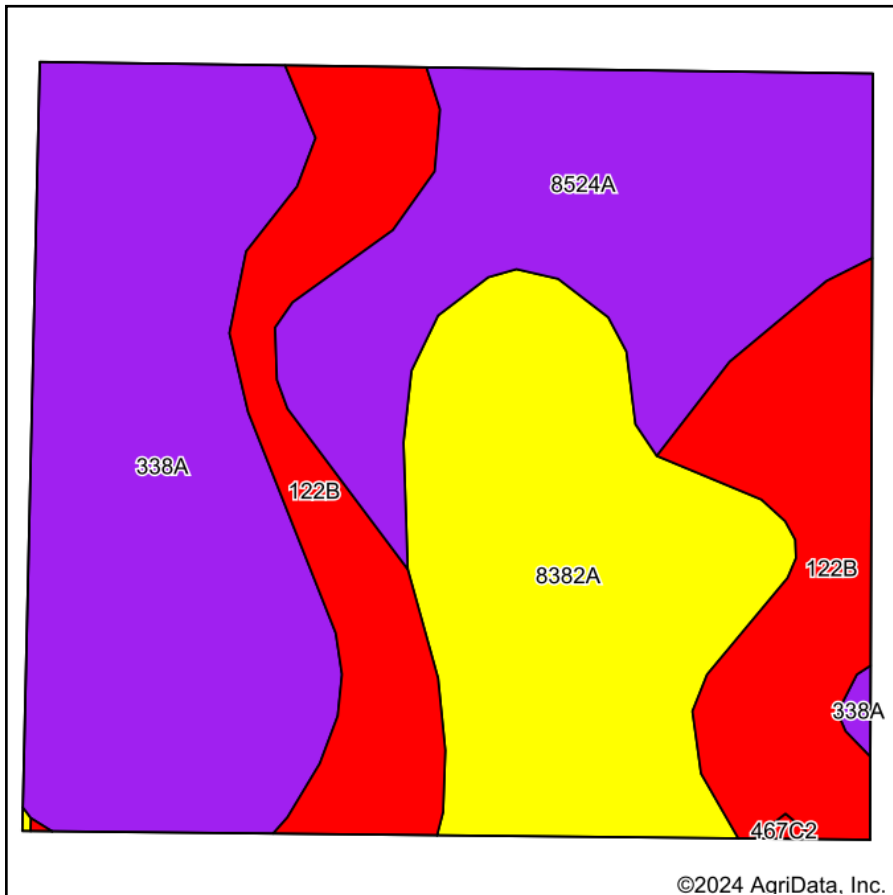
Maps Provided By:



© AgriData, Inc. 2023 www.AgriDataInc.com

Field borders provided by Farm Service Agency as of 5/21/2008.

Soils Map



State: **Illinois**
 County: **Saline**
 Location: **11-9S-6E**
 Township: **Harrisburg**
 Acres: **37.63**
 Date: **9/18/2024**



Soils data provided by USDA and NRCS.

Area Symbol: IL165, Soil Area Version: 18

Code	Soil Description	Acres	Percent of field	Il. State Productivity Index Legend	Corn Bu/A	Soybeans Bu/A	Wheat Bu/A	Grass-legume e e hay, T/A	Crop productivity index for optimum management	*n NCCPI Soybeans
338A	Hurst silt loam, 0 to 2 percent slopes	11.69	31.1%		134	44	55	4.10	100	55
8382A	Belknap silt loam, 0 to 2 percent slopes, occasionally flooded	8.90	23.7%		156	52	63	4.90	117	69
**122B	Colp silt loam, 2 to 5 percent slopes	8.67	23.0%		**131	**41	**55	**4.20	**96	57
**8524A	Zipp silty clay loam, 0 to 2 percent slopes, occasionally flooded	8.37	22.2%		**137	**46	**53	**4.30	**103	67
Weighted Average					139.2	45.6	56.4	4.4	103.8	*n 61.4

Table: Optimum Crop Productivity Ratings for Illinois Soil EFOTG are sourced from Bulletin 811 calculated Map Unit Base Yield Indices, and adjusted (Adj) for slope, erosion, flooding, and surface texture. Publication Date: 02-08-2023

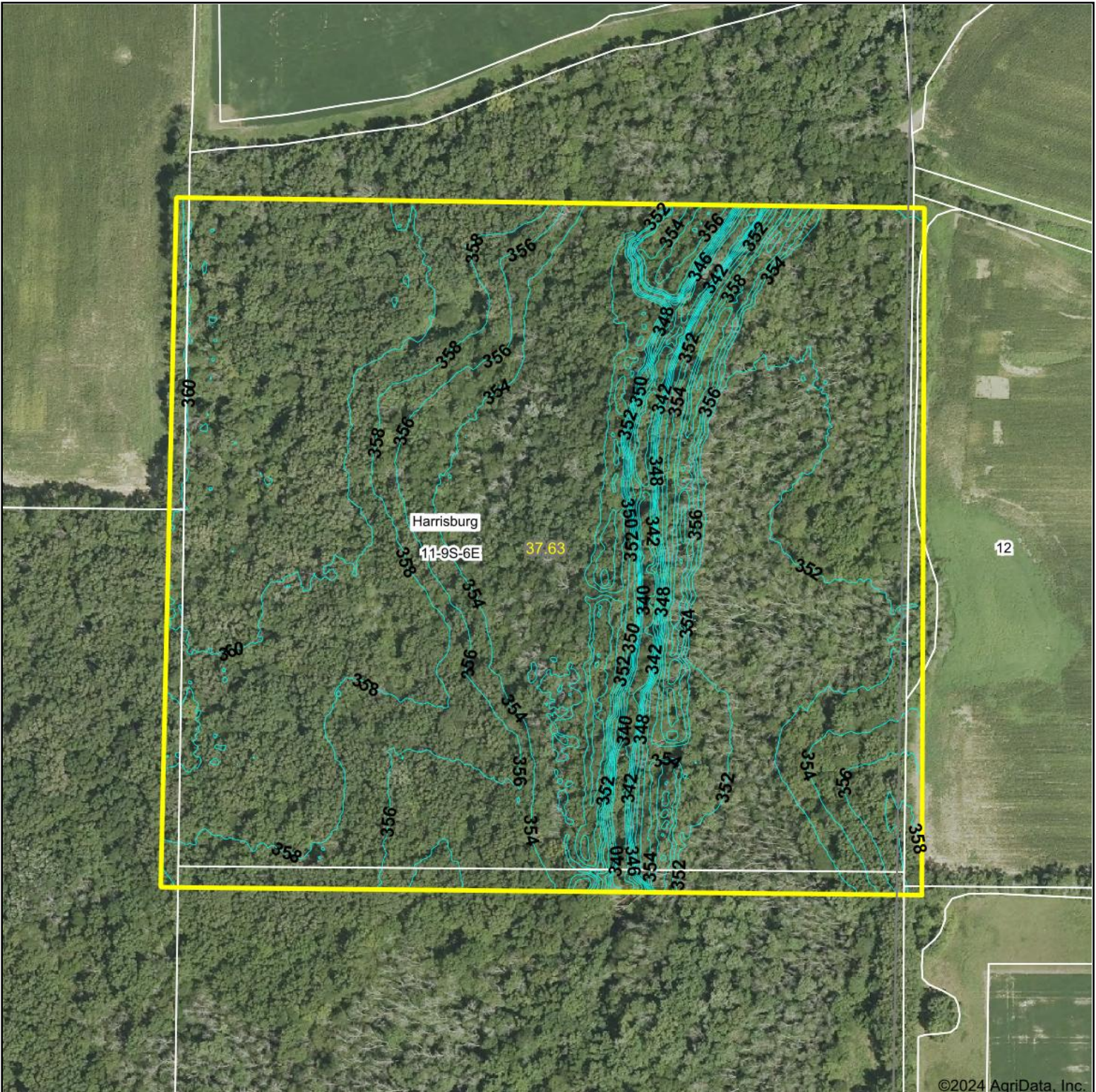
Crop yields and productivity (B811 EFOTG) are maintained at the following USDA web site: 2023 Illinois Soil Productivity and Yield Indices: <https://efotg.sc.egov.usda.gov/#/state/IL/documents/section=2&folder=52809>

** Base indexes from Bulletin 811 adjusted for slope, erosion, flooding, and surface texture according to the Il. Soils EFOTG

e Soils in the well drained group were not rated for grass-legume and are shown with a zero "0".

*n: The aggregation method is "Weighted Average using all components"

Topography Contours



©2024 AgriData, Inc.



Maps Provided By:



© AgriData, Inc. 2023 www.AgriDataInc.com

Source: USGS 1 meter dem
 Interval(ft): 2.0
 Min: 338.7
 Max: 362.5
 Range: 23.8
 Average: 355.2
 Standard Deviation: 4.17 ft

0ft 277ft 553ft



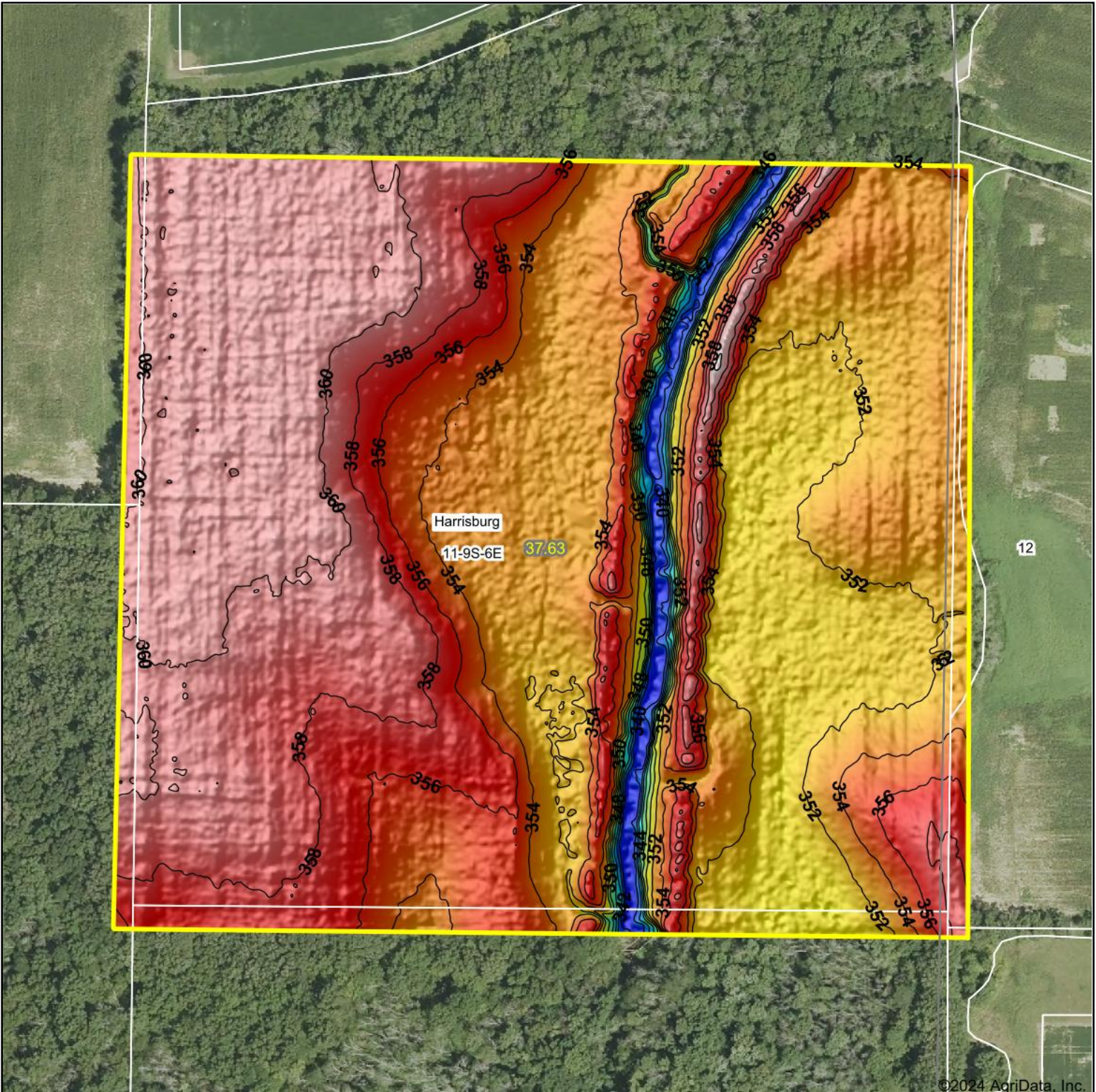
9/18/2024

11-9S-6E
 Saline County
 Illinois

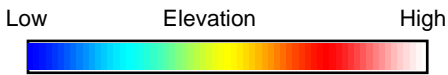
Boundary Center: 37° 45' 4.37, -88° 30' 21.82

Field borders provided by Farm Service Agency as of 5/21/2008.

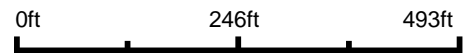
Topography Hillshade



©2024 AgriData, Inc.



Source: USGS 1 meter dem



Interval(ft): 2

Min: 338.7

Max: 362.5

Range: 23.8

Average: 355.2

Standard Deviation: 4.17 ft



9/18/2024

11-9S-6E
Saline County
Illinois

Boundary Center: 37° 45' 4.37, -88° 30' 21.82



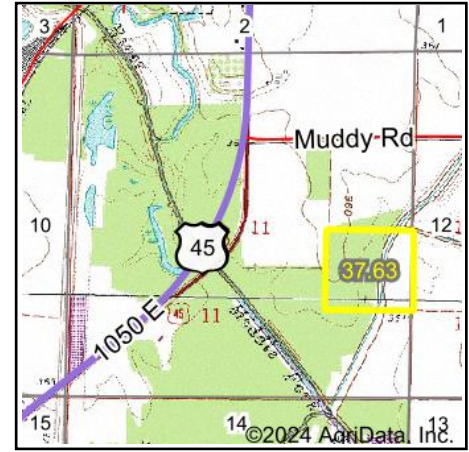
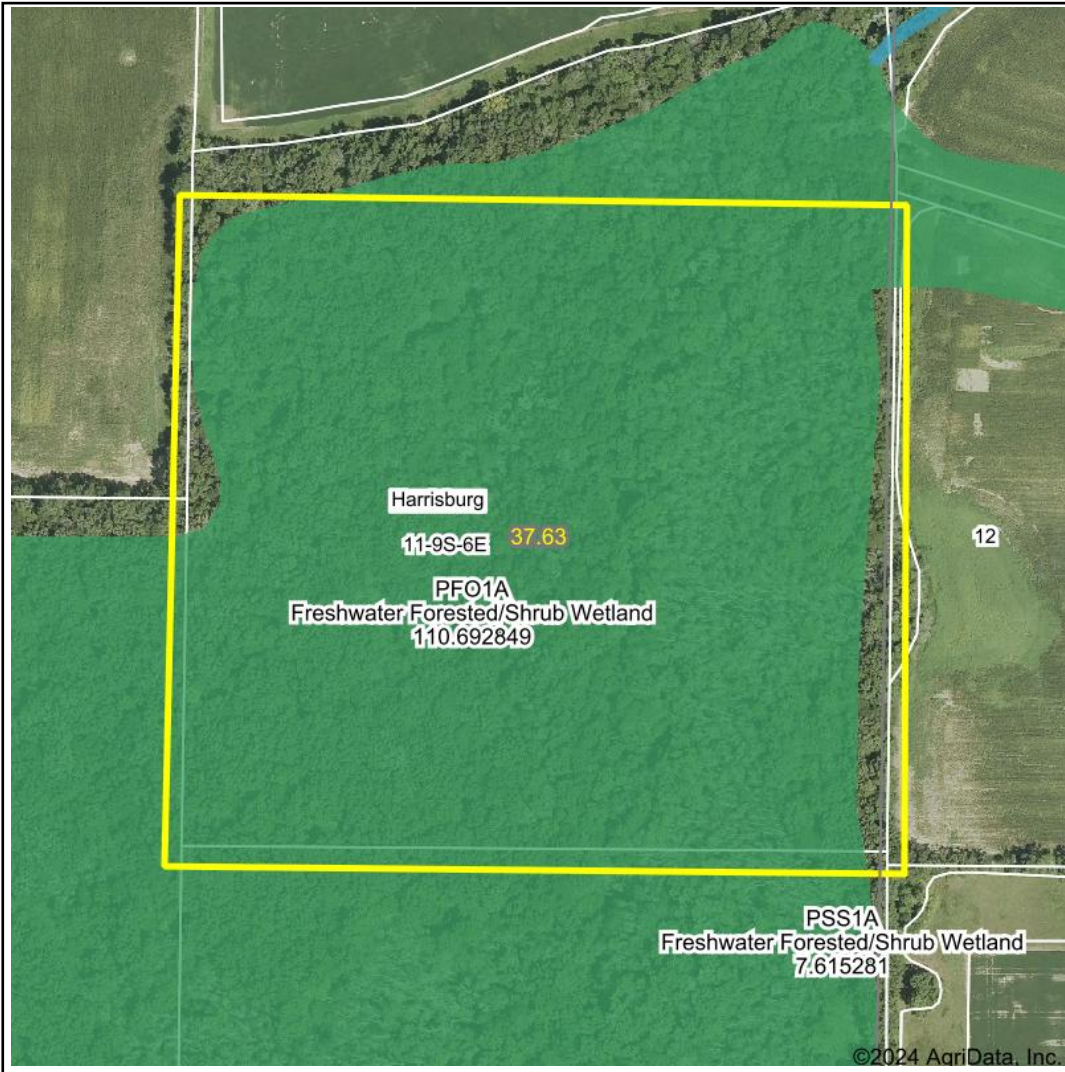
Maps Provided By:



© AgriData, Inc. 2023 www.AgriDataInc.com

Field borders provided by Farm Service Agency as of 5/21/2008.

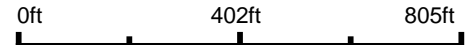
Wetlands Map



State: Illinois
Location: 11-9S-6E
County: Saline
Township: Harrisburg
Date: 9/18/2024


 Maps Provided By:

© AgriData, Inc. 2023 www.AgriDataInc.com



Classification Code	Type	Acres
PFO1A	Freshwater Forested/Shrub Wetland	30.68
PSS1A	Freshwater Forested/Shrub Wetland	4.37
Total Acres		35.05

Data Source: National Wetlands Inventory website. U.S. DoI, Fish and Wildlife Service, Washington, D.C. <http://www.fws.gov/wetlands/>