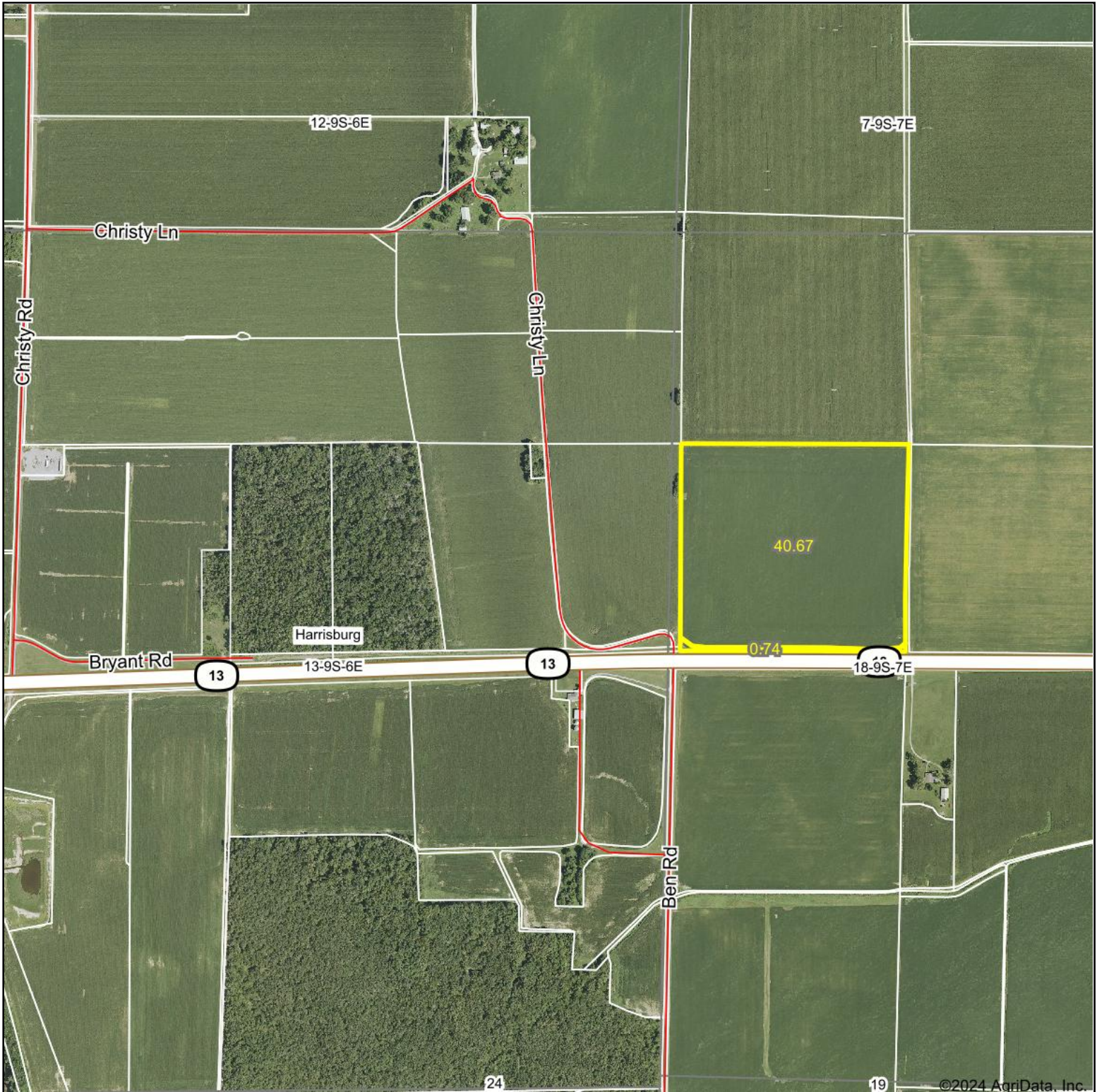
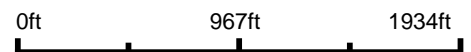


Aerial Map



Boundary Center: 37° 44' 26.64, -88° 28' 57.11



18-9S-7E
Saline County
Illinois



9/18/2024



Maps Provided By:



© AgriData, Inc. 2023 www.AgriDataInc.com

Field borders provided by Farm Service Agency as of 5/21/2008.

Aerial Map



Boundary Center: 37° 44' 26.64, -88° 28' 57.11



18-9S-7E
Saline County
Illinois



9/18/2024



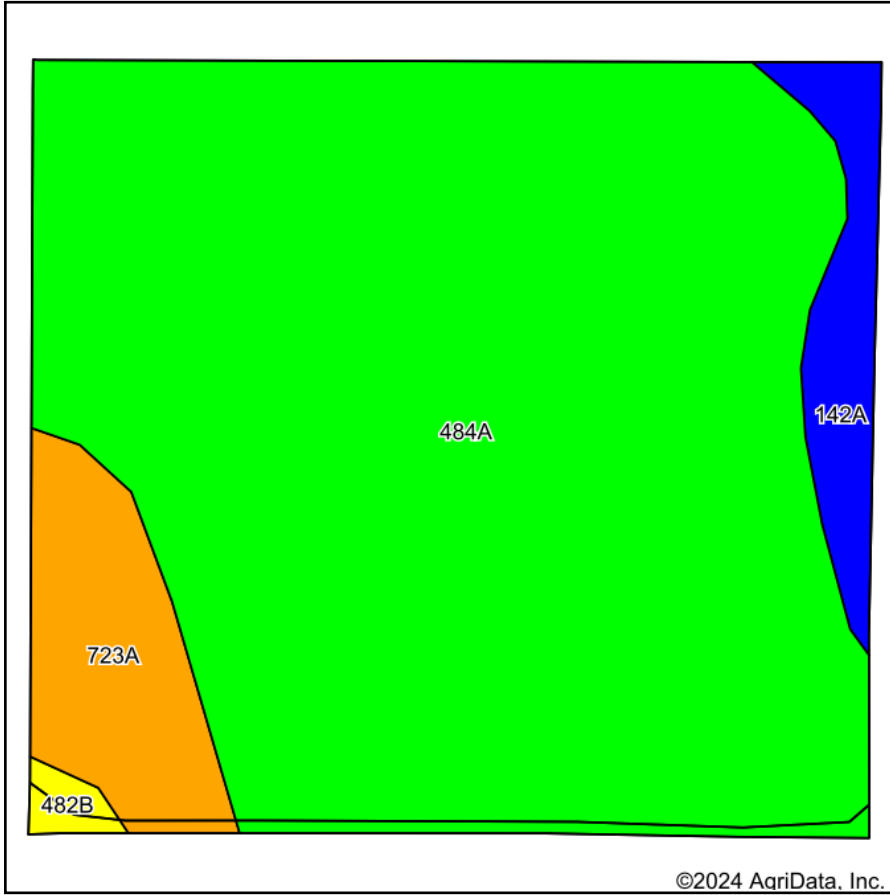
Maps Provided By:



© AgriData, Inc. 2023 www.AgriDataInc.com

Field borders provided by Farm Service Agency as of 5/21/2008.

Soils Map



State: **Illinois**
 County: **Saline**
 Location: **18-9S-7E**
 Township: **Cottage**
 Acres: **41.41**
 Date: **9/18/2024**



Maps Provided By:



Area Symbol: IL165, Soil Area Version: 18

Code	Soil Description	Acres	Percent of field	Il. State Productivity Index Legend	Corn Bu/A	Soybeans Bu/A	Wheat Bu/A	Grass-legume e hay, T/A	Crop productivity index for optimum management	*n NCCPI Soybeans
484A	Harco silt loam, 0 to 2 percent slopes	35.72	86.3%		190	61	74	5.60	140	83
723A	Reesville silt loam, 0 to 2 percent slopes	3.37	8.1%		170	55	66	6.10	124	80
**142A	Patton silty clay loam, 0 to 2 percent slopes	2.01	4.9%		**178	**58	**68	**5.40	**132	65
**482B	Uniontown silt loam, 2 to 6 percent slopes	0.31	0.7%		**158	**50	**60	**4.70	**115	71
Weighted Average					187.6	60.3	73	5.6	138.1	*n 81.8

Table: Optimum Crop Productivity Ratings for Illinois Soil EFOTG are sourced from Bulletin 811 calculated Map Unit Base Yield Indices, and adjusted (Adj) for slope, erosion, flooding, and surface texture. Publication Date: 02-08-2023

Crop yields and productivity (B811 EFOTG) are maintained at the following USDA web site: 2023 Illinois Soil Productivity and Yield Indices: <https://efotg.sc.egov.usda.gov/#/state/IL/documents/section=2&folder=52809>

** Base indexes from Bulletin 811 adjusted for slope, erosion, flooding, and surface texture according to the Il. Soils EFOTG

e Soils in the well drained group were not rated for grass-legume and are shown with a zero "0".

*n: The aggregation method is "Weighted Average using all components"

Topography Contours



©2024 AgriData, Inc.



Maps Provided By:



© AgriData, Inc. 2023

www.AgriDataInc.com

Source: USGS 1 meter dem
 Interval(ft): 2.0
 Min: 362.8
 Max: 368.4
 Range: 5.6
 Average: 367.6
 Standard Deviation: 0.79 ft



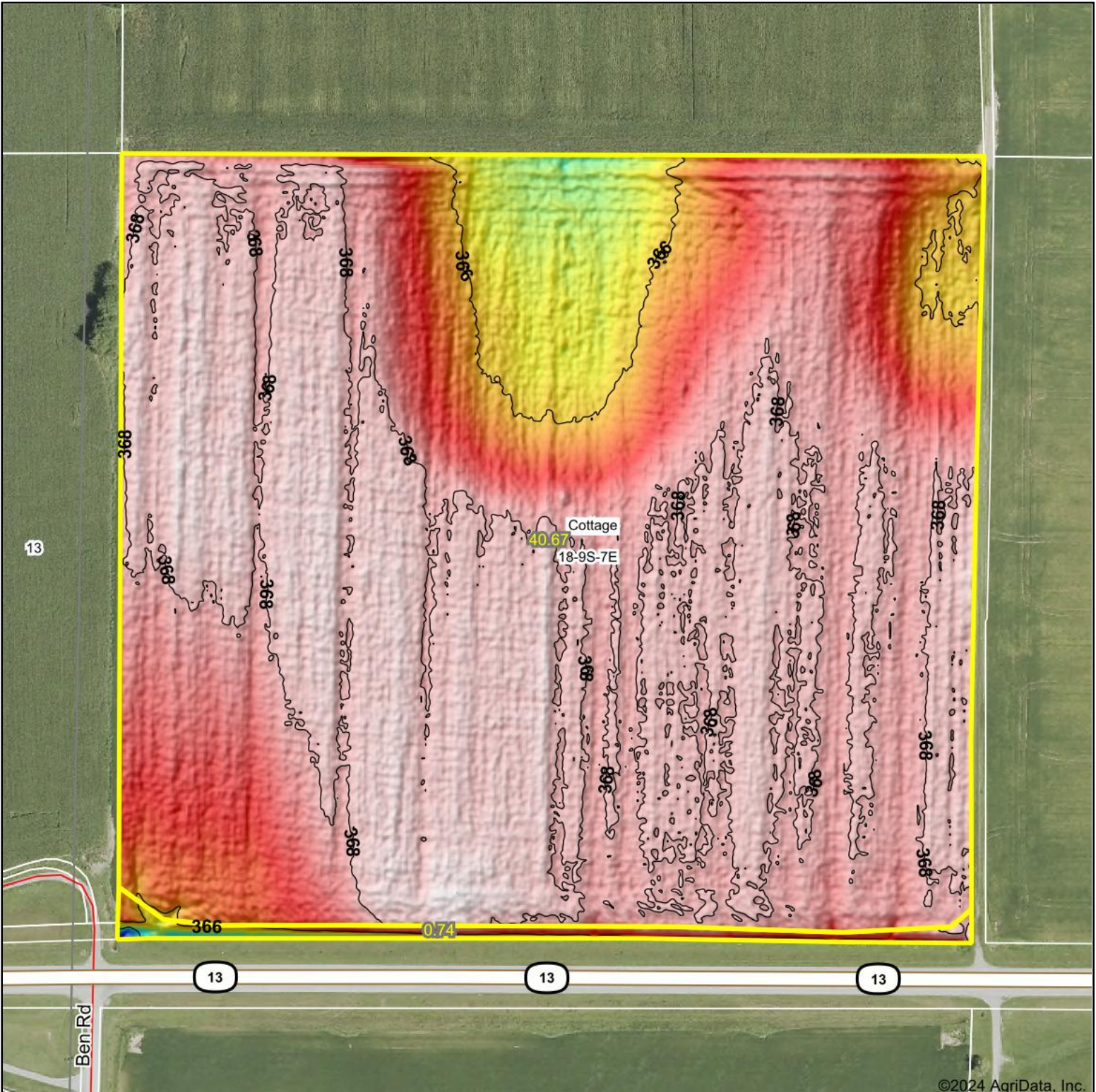
9/18/2024

18-9S-7E
Saline County
Illinois

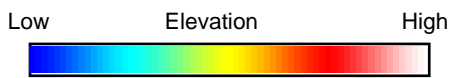
Boundary Center: 37° 44' 26.64, -88° 28' 57.11

Field borders provided by Farm Service Agency as of 5/21/2008.

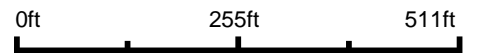
Topography Hillshade



©2024 AgriData, Inc.



Source: USGS 1 meter dem



Interval(ft): 2

Min: 362.8

Max: 368.4

Range: 5.6

Average: 367.6

Standard Deviation: 0.79 ft



9/18/2024

18-9S-7E
Saline County
Illinois

Boundary Center: 37° 44' 26.64, -88° 28' 57.11



Maps Provided By:



© AgriData, Inc. 2023 www.AgriDataInc.com

Field borders provided by Farm Service Agency as of 5/21/2008.