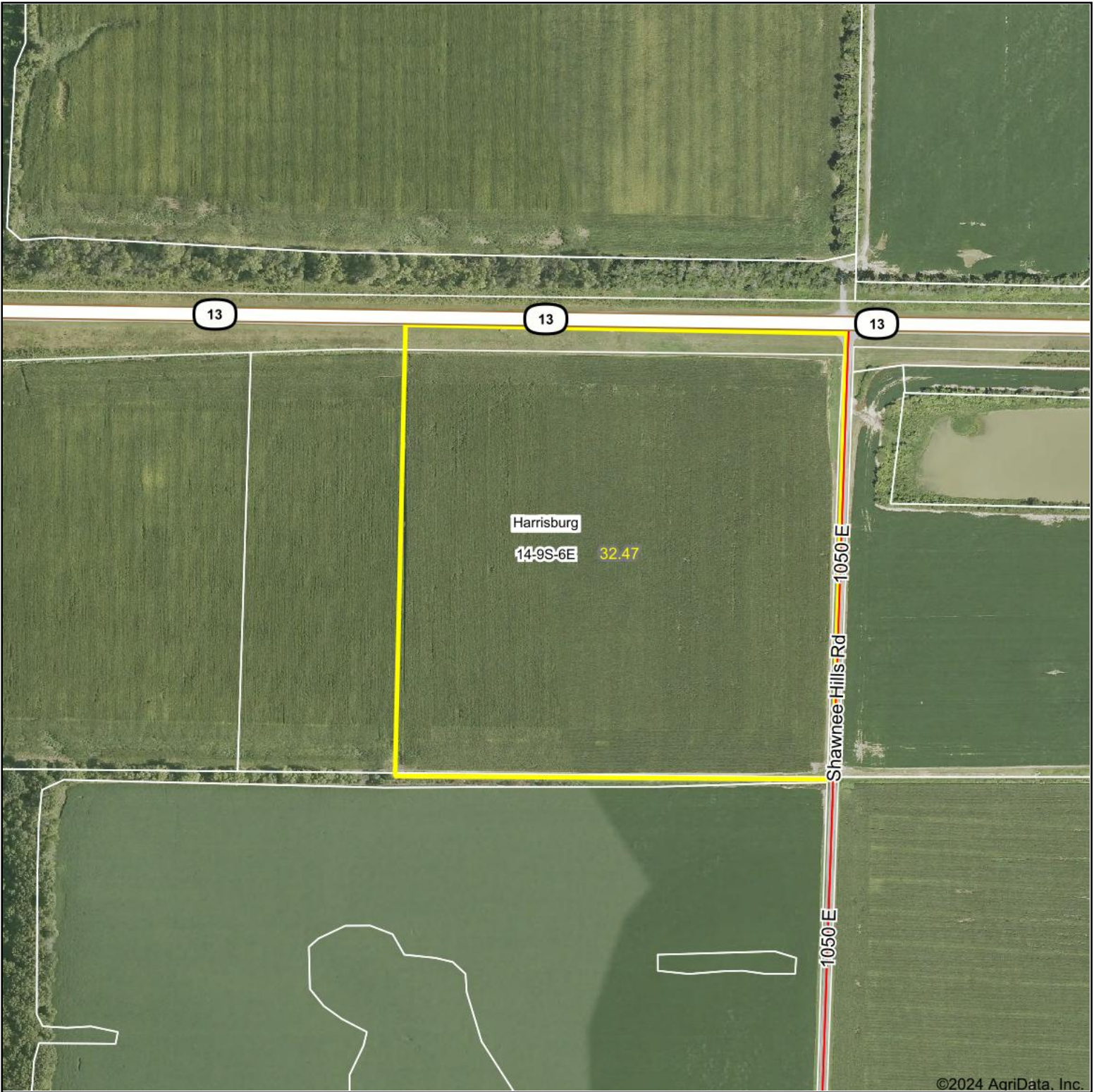


# Aerial Map



©2024 AgriData, Inc.

Boundary Center: 37° 44' 10.67, -88° 30' 53.54

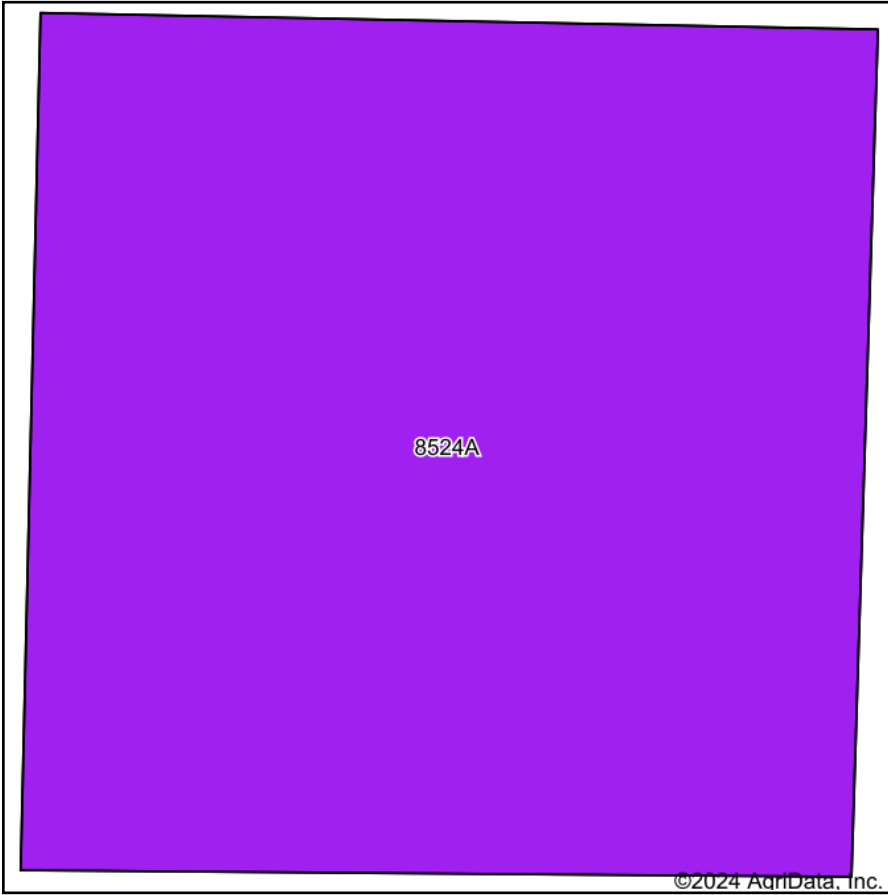


14-9S-6E  
Saline County  
Illinois

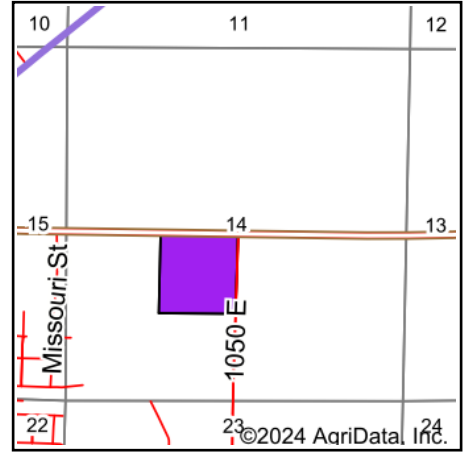


12/11/2024

# Soils Map



Soils data provided by USDA and NRCS.



State: **Illinois**  
 County: **Saline**  
 Location: **14-9S-6E**  
 Township: **Harrisburg**  
 Acres: **32.47**  
 Date: **12/11/2024**



Maps Provided By:



Area Symbol: IL165, Soil Area Version: 19

Code	Soil Description	Acres	Percent of field	II. State Productivity Index Legend	Corn Bu/A	Soybeans Bu/A	Wheat Bu/A	Grass-legume hay, T/A	Crop productivity index for optimum management	*n NCCPI Soybeans
**8524A	Zipp silty clay loam, 0 to 2 percent slopes, occasionally flooded	32.47	100.0%		**137	**46	**53	**4.30	**103	67
<b>Weighted Average</b>					<b>137</b>	<b>46</b>	<b>53</b>	<b>4.3</b>	<b>103</b>	<b>*n 67</b>

**Table: Optimum Crop Productivity Ratings for Illinois Soil EFOTG are sourced from Bulletin 811 calculated Map Unit Base Yield Indices, and adjusted (Adj) for slope, erosion, flooding, and surface texture.** Publication Date: 02-08-2023

Crop yields and productivity (B811 EFOTG) are maintained at the following USDA web site: 2023 Illinois Soil Productivity and Yield Indices:

<https://efotg.sc.egov.usda.gov/#/state/IL/documents/section=2&folder=52809>

\*\* Base indexes from Bulletin 811 adjusted for slope, erosion, flooding, and surface texture according to the II. Soils EFOTG

e Soils in the well drained group were not rated for grass-legume and are shown with a zero "0".

\*n: The aggregation method is "Weighted Average using all components"



# Topography Contours



©2024 AgriData, Inc.

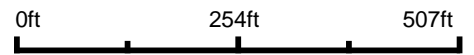


Maps Provided By:



© AgriData, Inc. 2023 www.AgriDataInc.com

Source: USGS 1 meter dem  
 Interval(ft): 2.0  
 Min: 357.1  
 Max: 369.3  
 Range: 12.2  
 Average: 359.9  
 Standard Deviation: 1.31 ft



12/11/2024

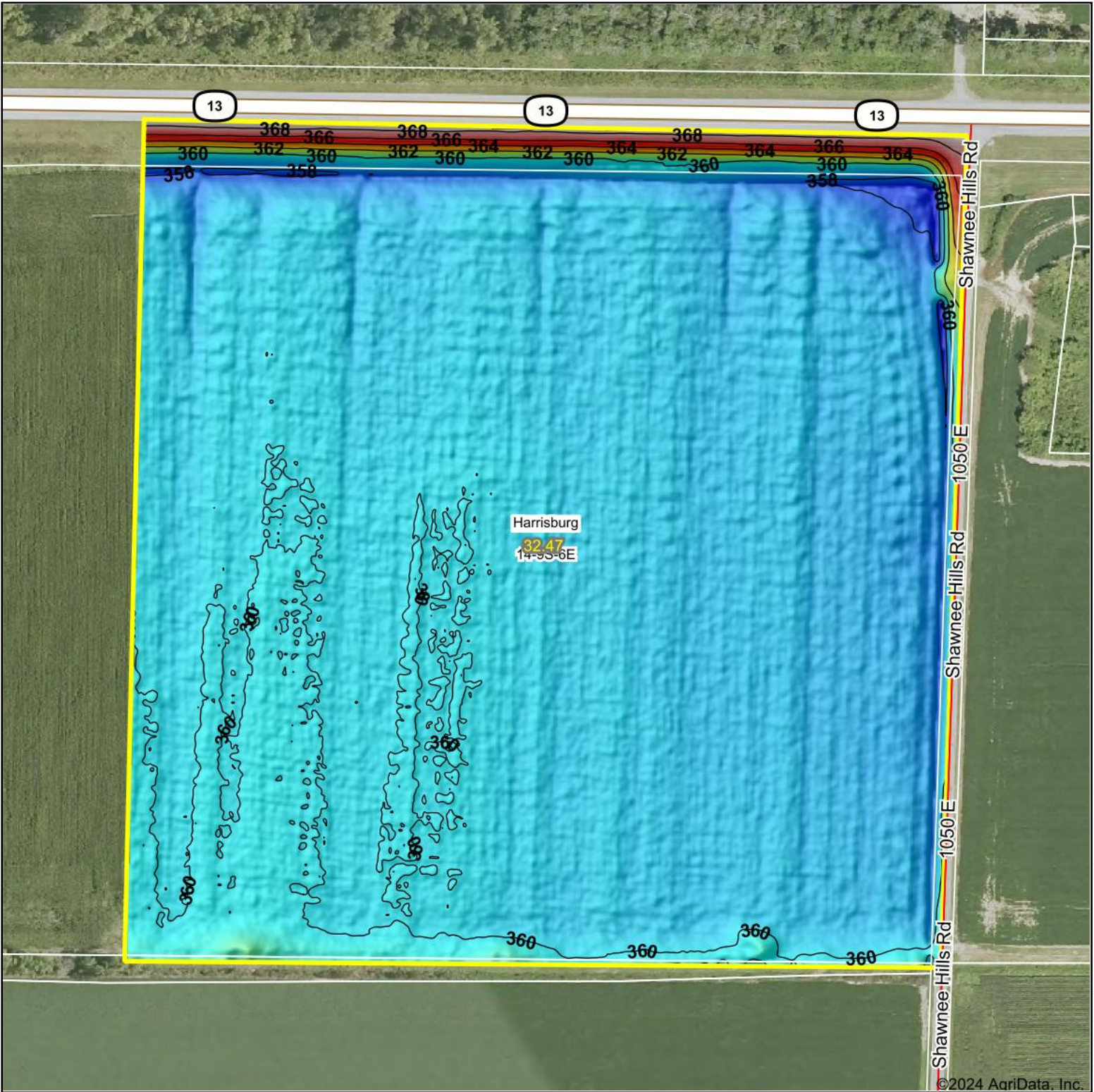
14-9S-6E  
 Saline County  
 Illinois

Boundary Center: 37° 44' 10.67, -88° 30' 53.54

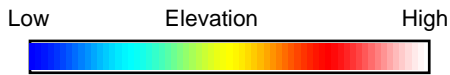
Field borders provided by Farm Service Agency as of 5/21/2008.



# Topography Hillshade



©2024 AgriData, Inc.



Source: USGS 1 meter dem  
 Interval(ft): 2  
 Min: 357.1  
 Max: 369.3  
 Range: 12.2  
 Average: 359.9  
 Standard Deviation: 1.31 ft



12/11/2024

**14-9S-6E**  
**Saline County**  
**Illinois**

Boundary Center: 37° 44' 10.67, -88° 30' 53.54



Maps Provided By:



© AgriData, Inc. 2023 www.AgriDataInc.com

Field borders provided by Farm Service Agency as of 5/21/2008.