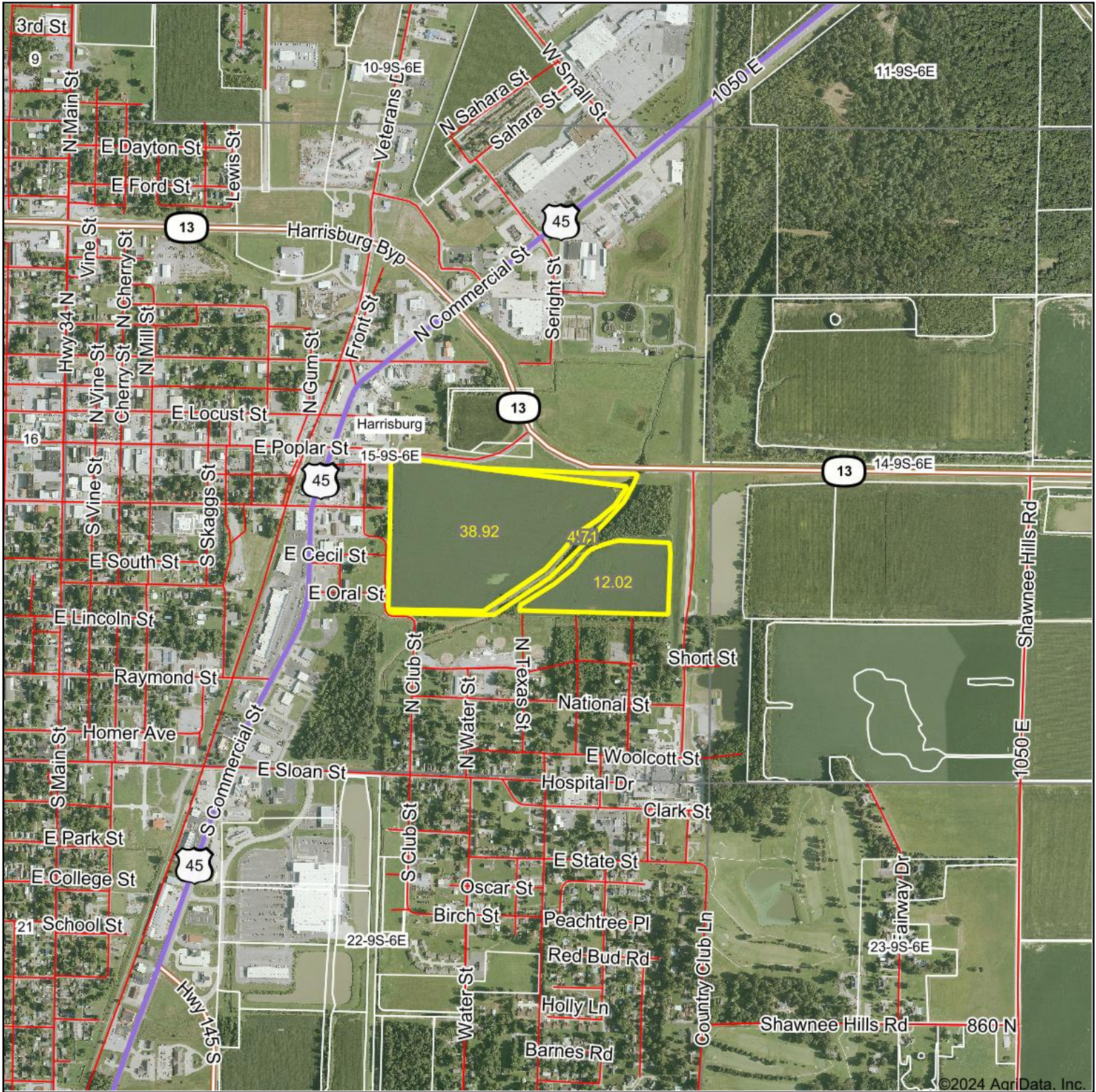


# Aerial Map



Boundary Center: 37° 44' 11.08, -88° 31' 37.16

0ft 1280ft 2560ft



**15-9S-6E**  
**Saline County**  
**Illinois**

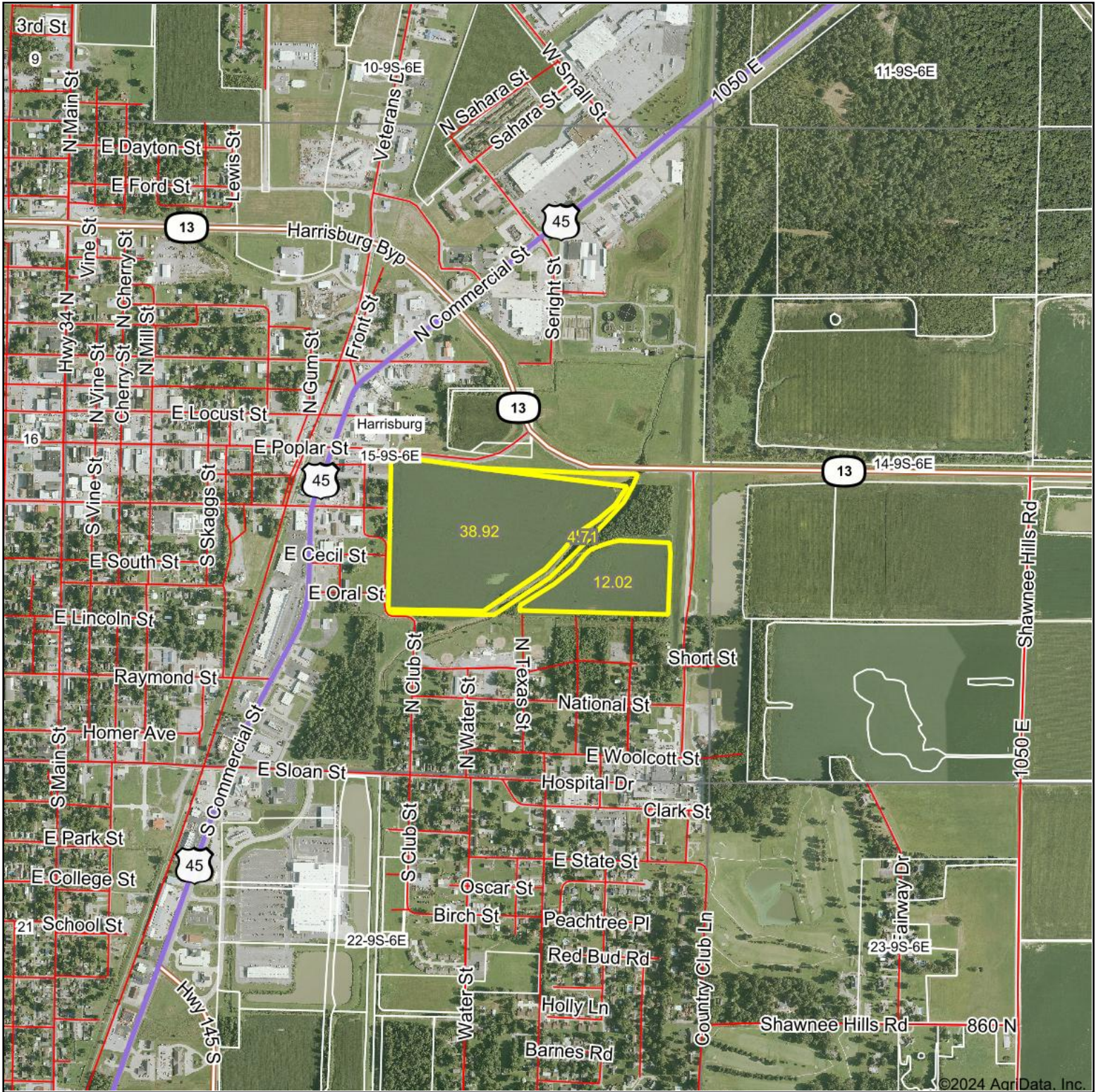


Maps Provided By:  
 **surety**  
CUSTOMIZED ONLINE MAPPING  
© AgriData, Inc. 2023 www.AgriDataInc.com

9/18/2024

Field borders provided by Farm Service Agency as of 5/21/2008.

# Aerial Map



Boundary Center: 37° 44' 11.08, -88° 31' 37.16

0ft 1280ft 2560ft



**15-9S-6E**  
**Saline County**  
**Illinois**



Maps Provided By:  
 **surety**  
CUSTOMIZED ONLINE MAPPING  
© AgriData, Inc. 2023 www.AgridataInc.com

9/18/2024

Field borders provided by Farm Service Agency as of 5/21/2008.

# Aerial Map



Boundary Center: 37° 44' 11.08, -88° 31' 37.16

0ft 549ft 1097ft



15-9S-6E  
Saline County  
Illinois

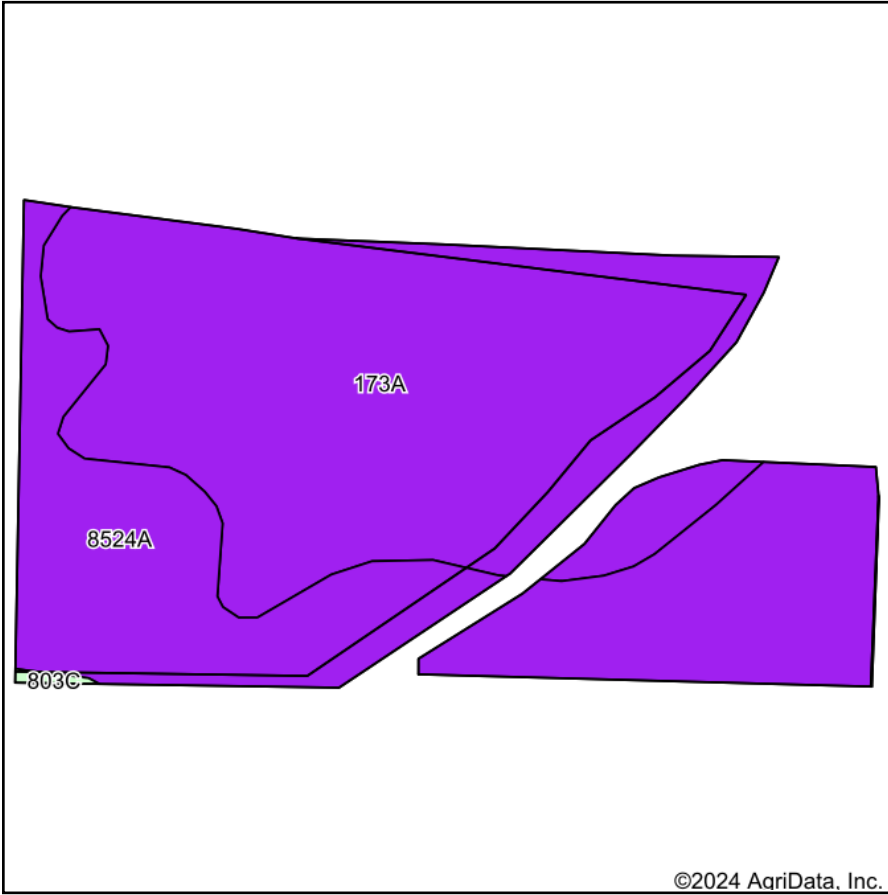


Maps Provided By:  
**surety**  
CUSTOMIZED ONLINE MAPPING  
© AgriData, Inc. 2023 www.AgriDataInc.com

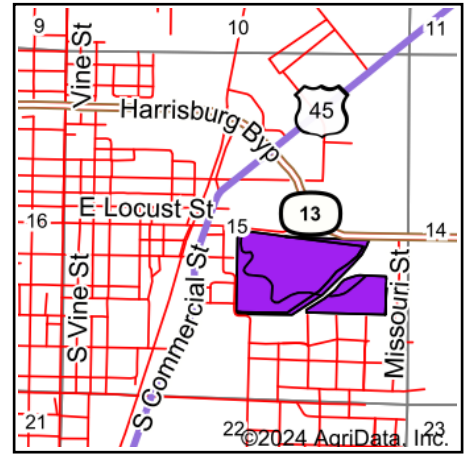
9/18/2024

Field borders provided by Farm Service Agency as of 5/21/2008.

# Soils Map



Soils data provided by USDA and NRCS.



State: **Illinois**  
 County: **Saline**  
 Location: **15-9S-6E**  
 Township: **Harrisburg**  
 Acres: **55.65**  
 Date: **9/18/2024**



Area Symbol: IL165, Soil Area Version: 18

Code	Soil Description	Acres	Percent of field	Il. State Productivity Index Legend	Corn Bu/A	Soybeans Bu/A	Wheat Bu/A	Grass-legume hay, T/A	Crop productivity index for optimum management	*n NCCPI Soybeans
173A	McGary silt loam, 0 to 2 percent slope	32.55	58.5%		132	45	56	4.30	100	63
**8524A	Zipp silty clay loam, 0 to 2 percent slopes, occasionally flooded	22.95	41.2%		**137	**46	**53	**4.30	**103	67
**803C	Orthents, 5 to 15 percent slopes	0.15	0.3%		**998	**998	**998	-998.00	**998	63
<b>Weighted Average</b>					<b>131</b>	<b>42.6</b>	<b>51.9</b>	<b>1.6</b>	<b>98.3</b>	<b>*n 64.6</b>

**Table: Optimum Crop Productivity Ratings for Illinois Soil EFOTG are sourced from Bulletin 811 calculated Map Unit Base Yield Indices, and adjusted (Adj) for slope, erosion, flooding, and surface texture.** Publication Date: 02-08-2023

Crop yields and productivity (B811 EFOTG) are maintained at the following USDA web site: 2023 Illinois Soil Productivity and Yield Indices:

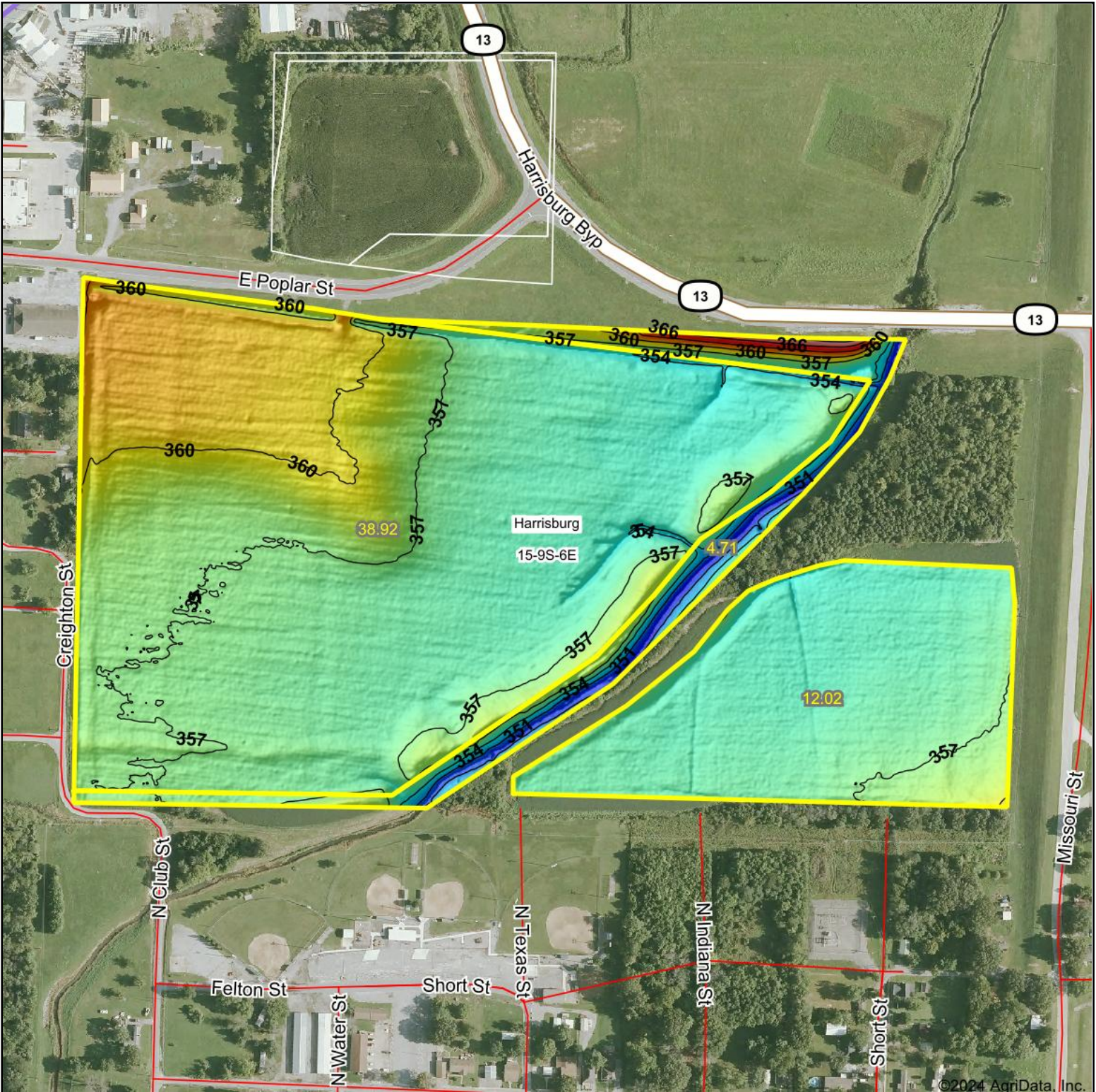
<https://efotg.sc.egov.usda.gov/#/state/IL/documents/section=2&folder=52809>


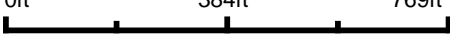

\*\* Base indexes from Bulletin 811 adjusted for slope, erosion, flooding, and surface texture according to the Il. Soils EFOTG

e Soils in the well drained group were not rated for grass-legume and are shown with a zero "0".

\*n: The aggregation method is "Weighted Average using all components"

# Topography Hillshade

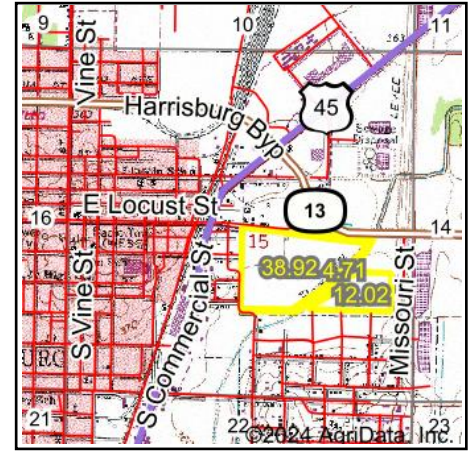
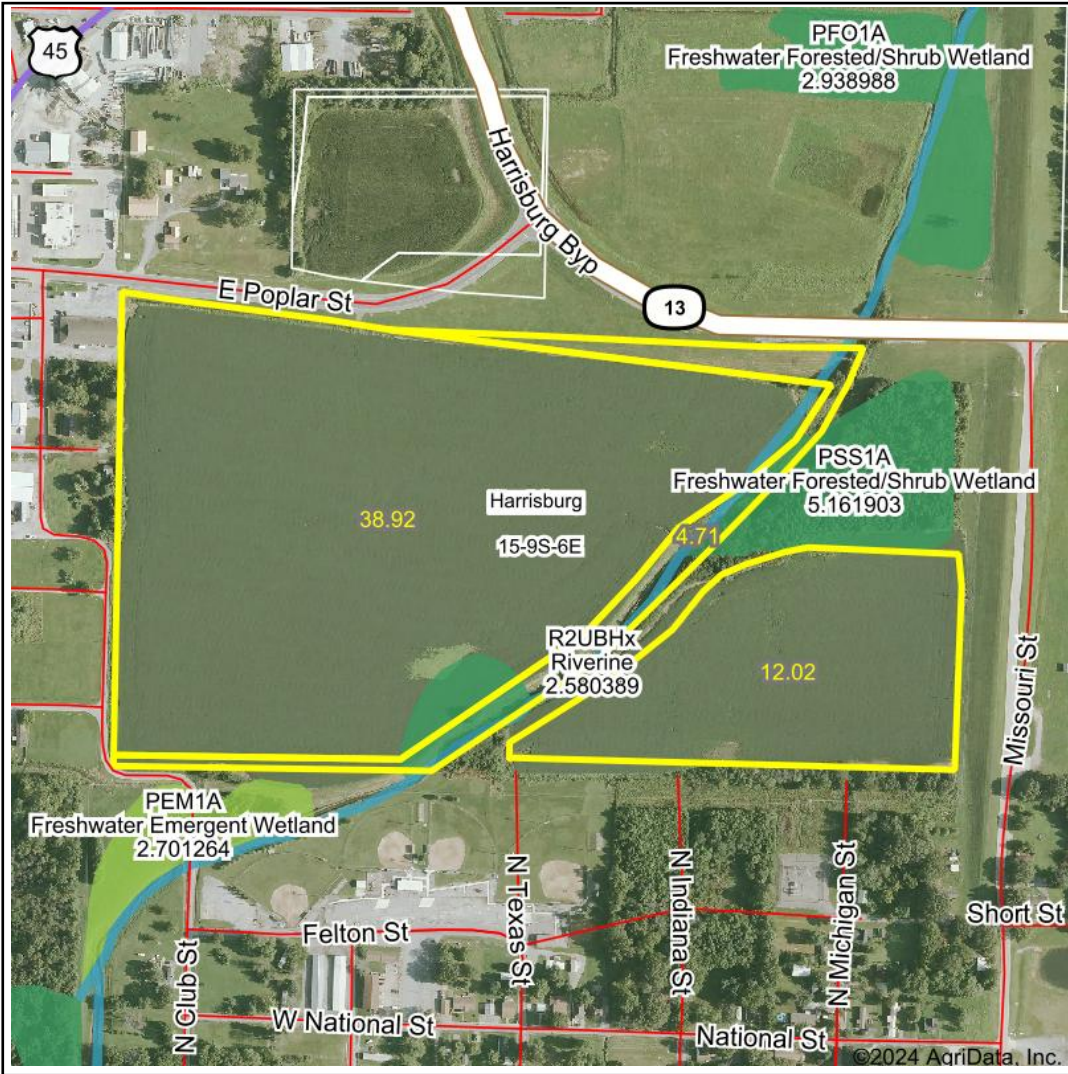


<p>Low      Elevation      High</p> 	<p>Source: USGS 1 meter dem              Interval(ft): 3              Min: 348.1              Max: 371.6              Range: 23.5              Average: 356.9              Standard Deviation: 2.23 ft</p>	<p>0ft      384ft      769ft</p>  <p>               9/18/2024  <b>15-9S-6E</b>  <b>Saline County</b>  <b>Illinois</b>              Boundary Center: 37° 44' 11.08, -88° 31' 37.16         </p>
--	--	--



© AgriData, Inc. 2023      www.AgriDataInc.com  
 Field borders provided by Farm Service Agency as of 5/21/2008.

# Wetlands Map



**State:** Illinois  
**Location:** 15-9S-6E  
**County:** Saline  
**Township:** Harrisburg  
**Date:** 9/18/2024



Maps Provided By:



© AgriData, Inc. 2023 www.AgriDataInc.com



0ft 603ft 1206ft

Classification Code	Type	Acres
PFO1A	Freshwater Forested/Shrub Wetland	1.39
R2UBHx	Riverine	0.86
PSS1A	Freshwater Forested/Shrub Wetland	0.50
Total Acres		2.75

Data Source: National Wetlands Inventory website. U.S. DoI, Fish and Wildlife Service, Washington, D.C. <http://www.fws.gov/wetlands/>