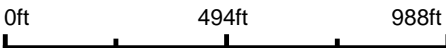


Aerial Map



Boundary Center: 38° 37' 21.32, -88° 53' 57.9



8-2N-3E
Marion County
Illinois



Maps Provided By:
surety
CUSTOMIZED ONLINE MAPPING
© AgriData, Inc. 2023 www.AgriDataInc.com

12/21/2024

Field borders provided by Farm Service Agency as of 5/21/2008.

Aerial Map



Map Center: 38° 37' 21.65, -88° 53' 58.14



8-2N-3E
Marion County
Illinois

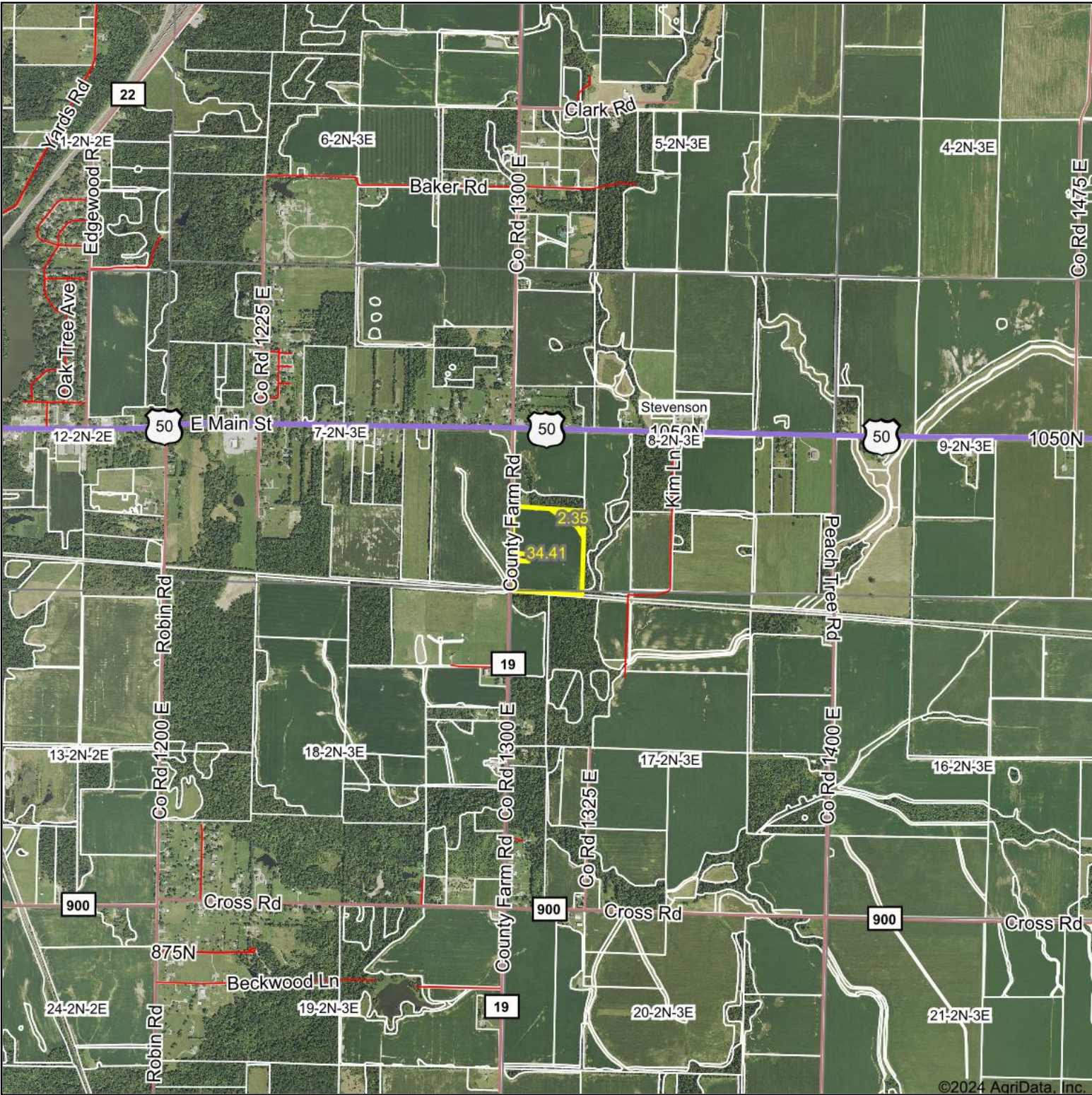


Maps Provided By:
surety
CUSTOMIZED ONLINE MAPPING
© AgriData, Inc. 2023 www.AgriDataInc.com

12/21/2024

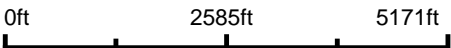
Field borders provided by Farm Service Agency as of 5/21/2008.

Aerial Map



©2024 AgriData, Inc.

Boundary Center: 38° 37' 21.32, -88° 53' 57.9



8-2N-3E
Marion County
Illinois

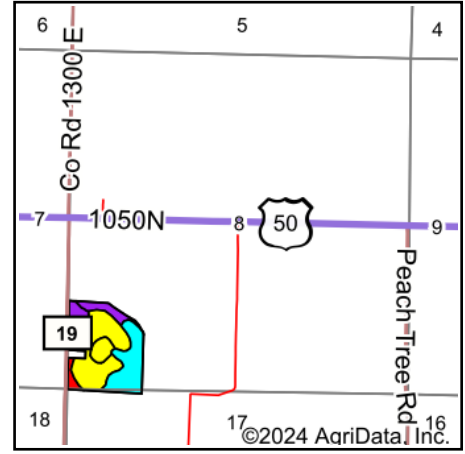
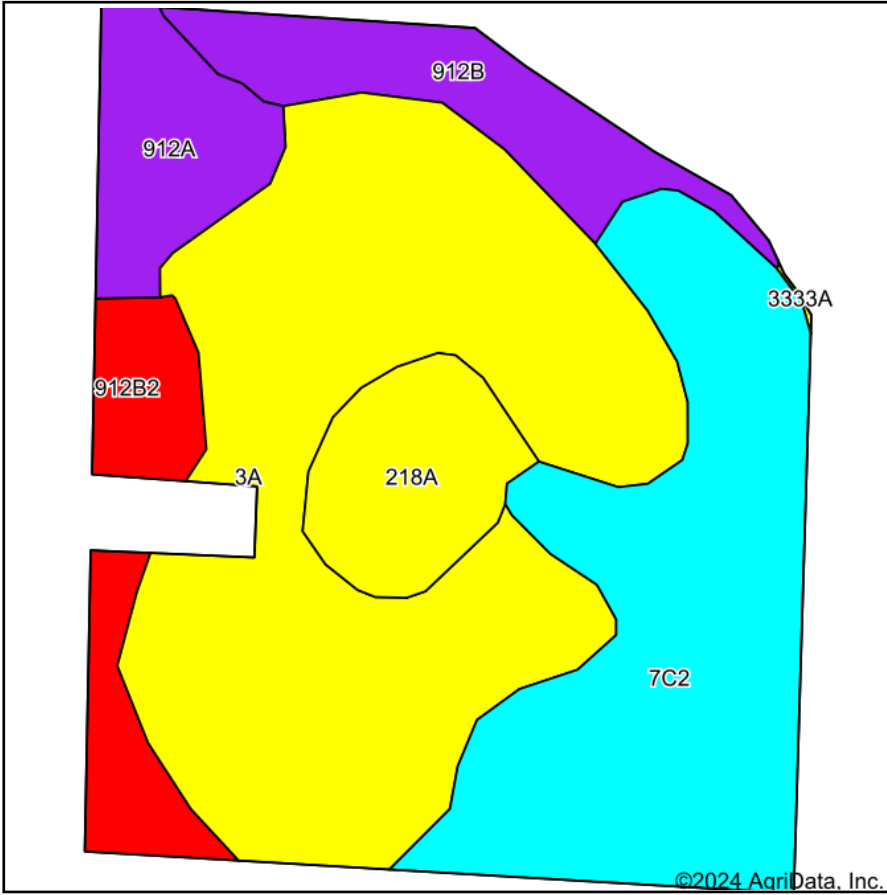


Maps Provided By:
 **surety**[®]
CUSTOMIZED ONLINE MAPPING
© AgriData, Inc. 2023 www.AgriDataInc.com

12/21/2024

Field borders provided by Farm Service Agency as of 5/21/2008.

Soils Map



State: **Illinois**
 County: **Marion**
 Location: **8-2N-3E**
 Township: **Stevenson**
 Acres: **34.41**
 Date: **12/21/2024**



Maps Provided By:



Soils data provided by USDA and NRCS.

Area Symbol: IL121, Soil Area Version: 21										
Code	Soil Description	Acres	Percent of field	Il. State Productivity Index Legend	Corn Bu/A	Soybeans Bu/A	Wheat Bu/A	Grass-legume e e hay, T/A	Crop productivity index for optimum management	*n NCCPI Soybeans
3A	Hoyleton silt loam, 0 to 2 percent slopes	15.01	43.7%		146	46	58	4.60	108	64
**7C2	Atlas silt loam, 5 to 10 percent slopes, eroded	9.67	28.1%		**104	**36	**41	**3.10	**80	48
**912B	Hoyleton-Darmstadt silt loams, 2 to 5 percent slopes	2.70	7.8%		**131	**45	**51	**4.50	**100	65
**912B2	Hoyleton-Darmstadt silt loams, 2 to 5 percent slopes, eroded	2.39	6.9%		**124	**42	**48	**3.50	**95	56
218A	Newberry silt loam, 0 to 2 percent slopes	2.38	6.9%		155	48	60	4.80	114	72
912A	Hoyleton-Darmstadt silt loams, 0 to 2 percent slopes	2.26	6.6%		132	45	51	4.50	101	67
Weighted Average					131.2	42.9	51.7	4.1	98.6	*n 59.8

Table: Optimum Crop Productivity Ratings for Illinois Soil EFOTG are sourced from Bulletin 811 calculated Map Unit Base Yield Indices, and adjusted (Adj) for slope, erosion, flooding, and surface texture. Publication Date: 02-08-2023

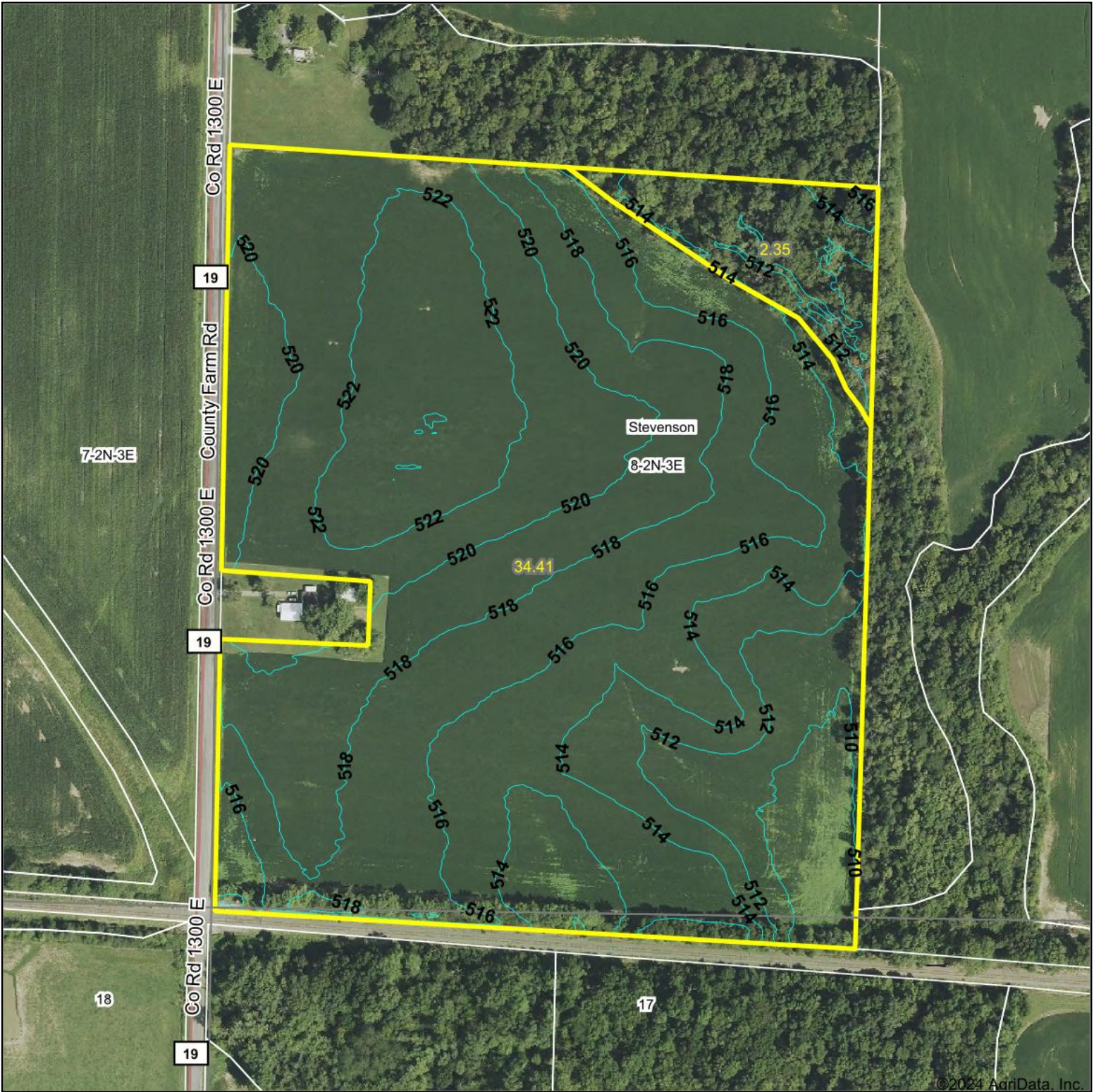
Crop yields and productivity (B811 EFOTG) are maintained at the following USDA web site: 2023 Illinois Soil Productivity and Yield Indices: <https://efotg.sc.egov.usda.gov/#/state/IL/documents/section=2&folder=52809>

** Base indexes from Bulletin 811 adjusted for slope, erosion, flooding, and surface texture according to the Il. Soils EFOTG

e Soils in the well drained group were not rated for grass-legume and are shown with a zero "0".

*n: The aggregation method is "Weighted Average using all components"

Topography Contours



©2024 AgriData, Inc.



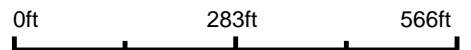
Maps Provided By:



© AgriData, Inc. 2023

www.AgriDataInc.com

Source: USGS 1 meter dem
Interval(ft): 2.0
Min: 508.8
Max: 524.1
Range: 15.3
Average: 517.1
Standard Deviation: 3.74 ft



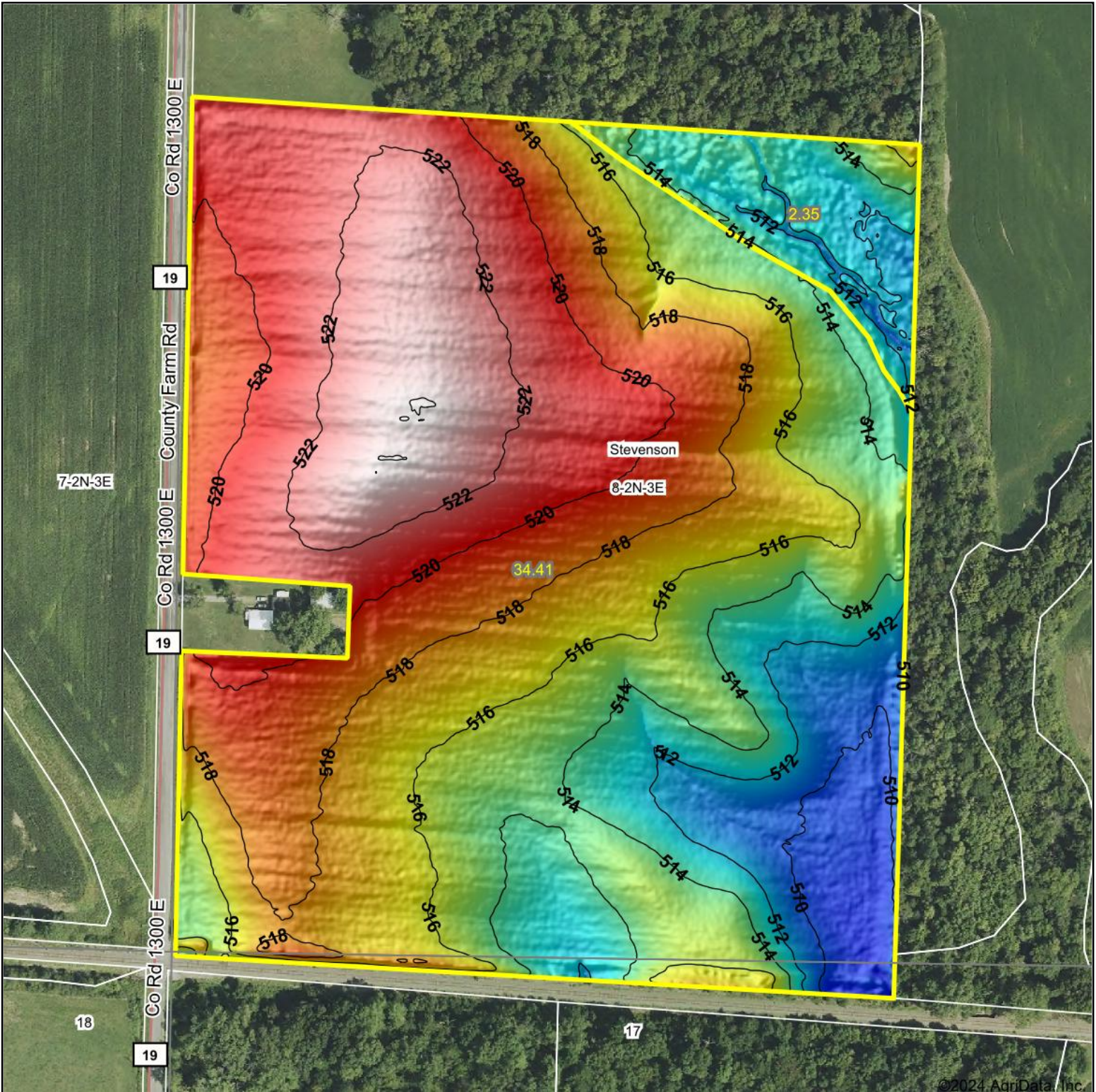
12/21/2024

8-2N-3E
Marion County
Illinois

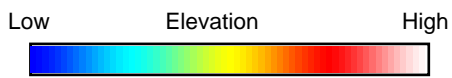
Boundary Center: 38° 37' 21.32, -88° 53' 57.9

Field borders provided by Farm Service Agency as of 5/21/2008.

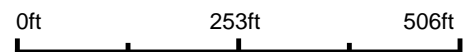
Topography Hillshade



©2024 AgriData, Inc.



Source: USGS 1 meter dem



Interval(ft): 2

Min: 508.8

Max: 524.1

Range: 15.3

Average: 517.1

Standard Deviation: 3.74 ft



12/21/2024

8-2N-3E
Marion County
Illinois

Boundary Center: 38° 37' 21.32, -88° 53' 57.9



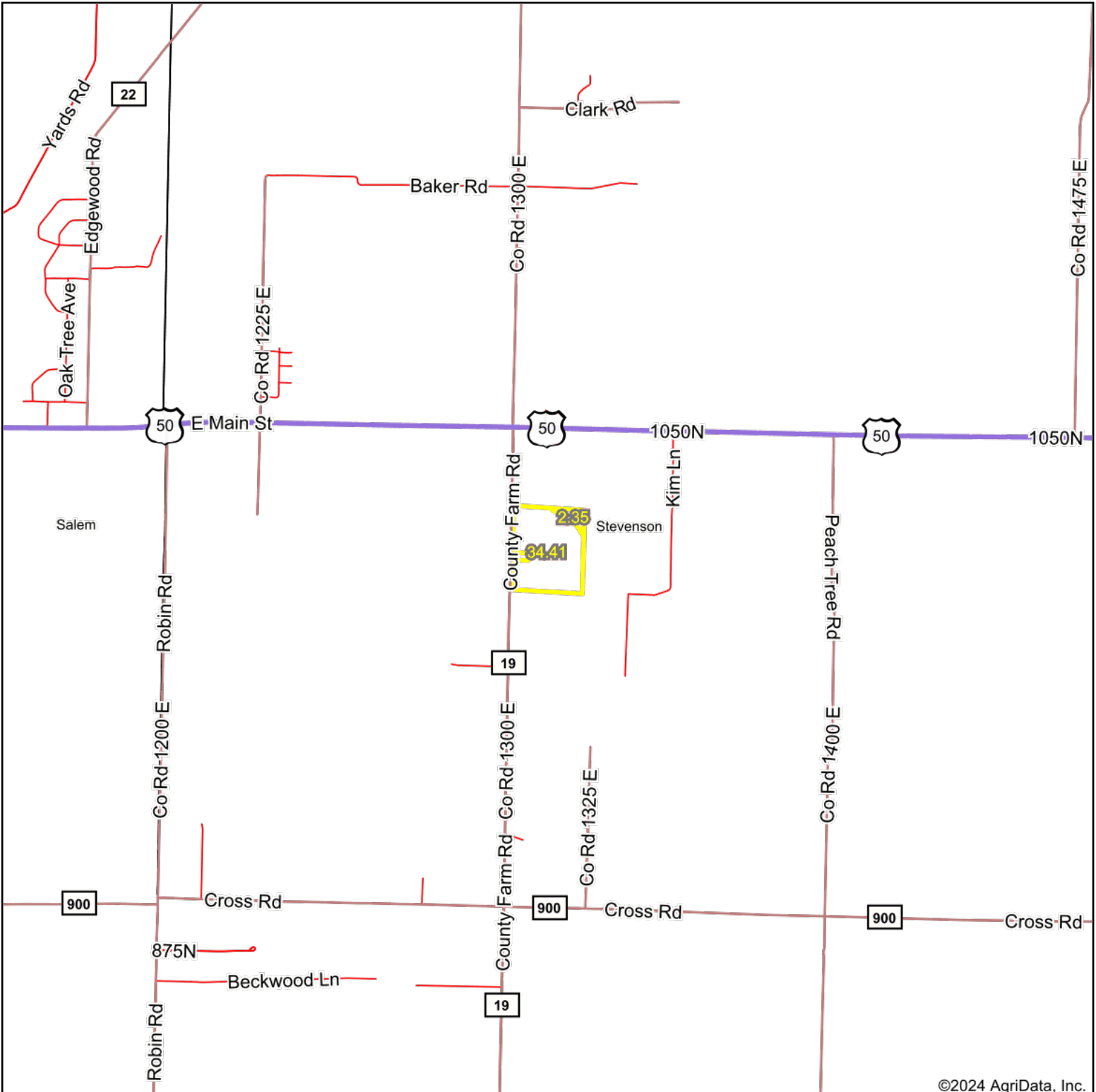
Maps Provided By:



© AgriData, Inc. 2023 www.AgriDataInc.com

Field borders provided by Farm Service Agency as of 5/21/2008.

Overview Map



©2024 AgriData, Inc.

Map Center: 38° 37' 21.64, -88° 53' 58.1



Maps Provided By:

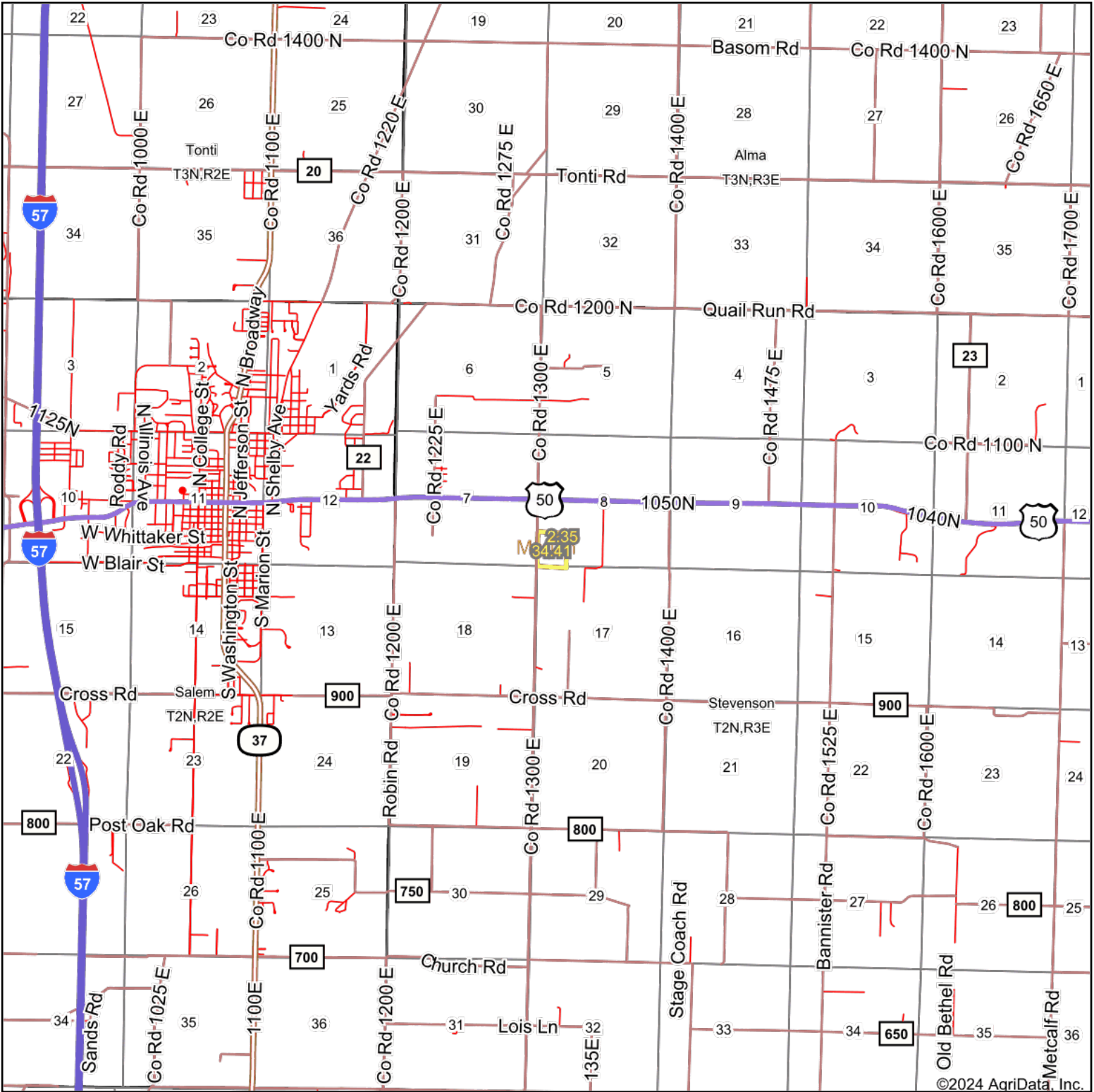


© AgriData, Inc. 2023 www.AgriDataInc.com



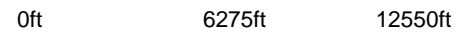
12/21/2024

Overview Map



©2024 AgriData, Inc.

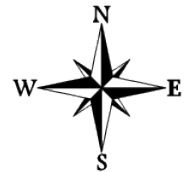
Map Center: 38° 37' 22.33, -88° 54' 0.75



Maps Provided By:



© AgriData, Inc. 2023 www.AgriDataInc.com



12/21/2024