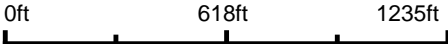


Aerial Map



Boundary Center: 38° 35' 33.15, -89° 1' 42.15



19-2N-2E
Marion County
Illinois



Maps Provided By:
surety
CUSTOMIZED ONLINE MAPPING
© AgriData, Inc. 2023 www.AgriDataInc.com

12/22/2024

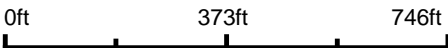
Field borders provided by Farm Service Agency as of 5/21/2008.

Aerial Map



©2024 AgriData, Inc.

Boundary Center: 38° 35' 33.06, -89° 1' 42.34



19-2N-2E
Marion County
Illinois

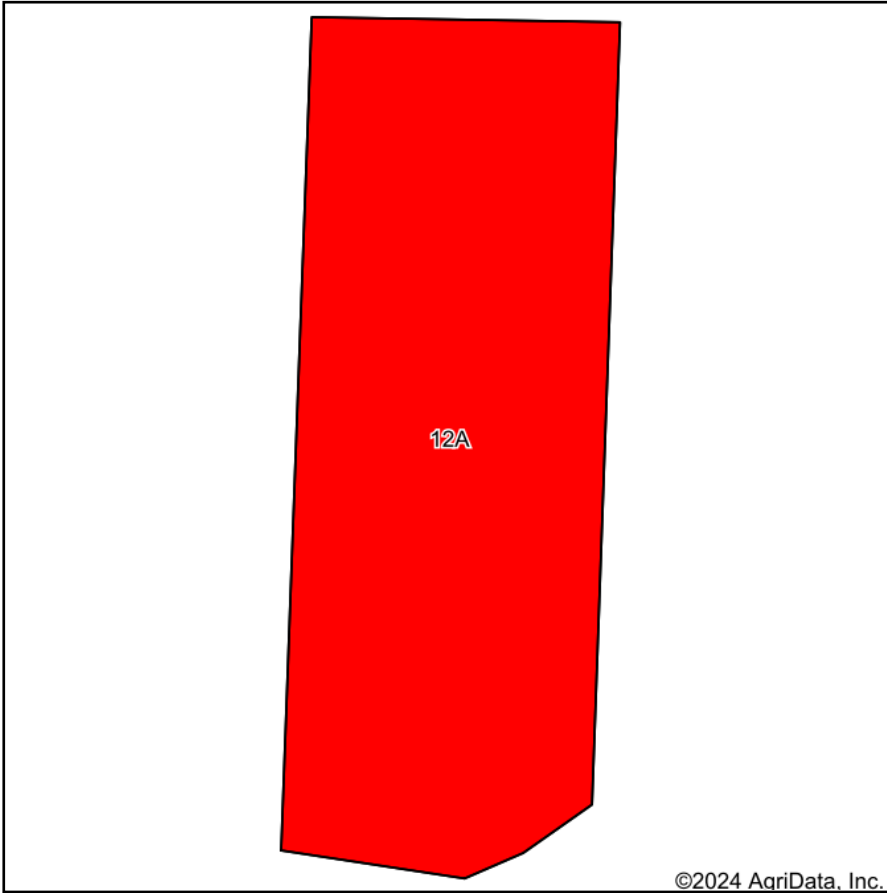


Maps Provided By:
surety
CUSTOMIZED ONLINE MAPPING
© AgriData, Inc. 2023 www.AgriDataInc.com

12/22/2024

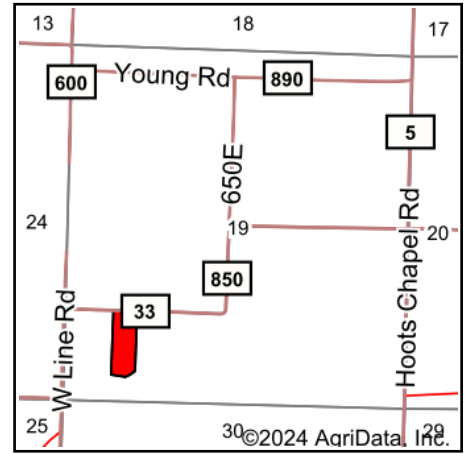
Field borders provided by Farm Service Agency as of 5/21/2008.

Soils Map



©2024 AgriData, Inc.

Soils data provided by USDA and NRCS.



State: **Illinois**
 County: **Marion**
 Location: **19-2N-2E**
 Township: **Salem**
 Acres: **7.89**
 Date: **12/22/2024**



Maps Provided By:



Area Symbol: IL121, Soil Area Version: 21

Code	Soil Description	Acres	Percent of field	Il. State Productivity Index Legend	Corn Bu/A	Soybeans Bu/A	Wheat Bu/A	Grass-legume e hay, T/A	Crop productivity index for optimum management	*n NCCPI Soybeans
12A	Wynoose silt loam, 0 to 2 percent slopes	7.89	100.0%		128	42	51	4.30	97	49
Weighted Average					128	42	51	4.3	97	*n 49

Table: Optimum Crop Productivity Ratings for Illinois Soil EFOTG are sourced from Bulletin 811 calculated Map Unit Base Yield Indices, and adjusted (Adj) for slope, erosion, flooding, and surface texture. Publication Date: 02-08-2023

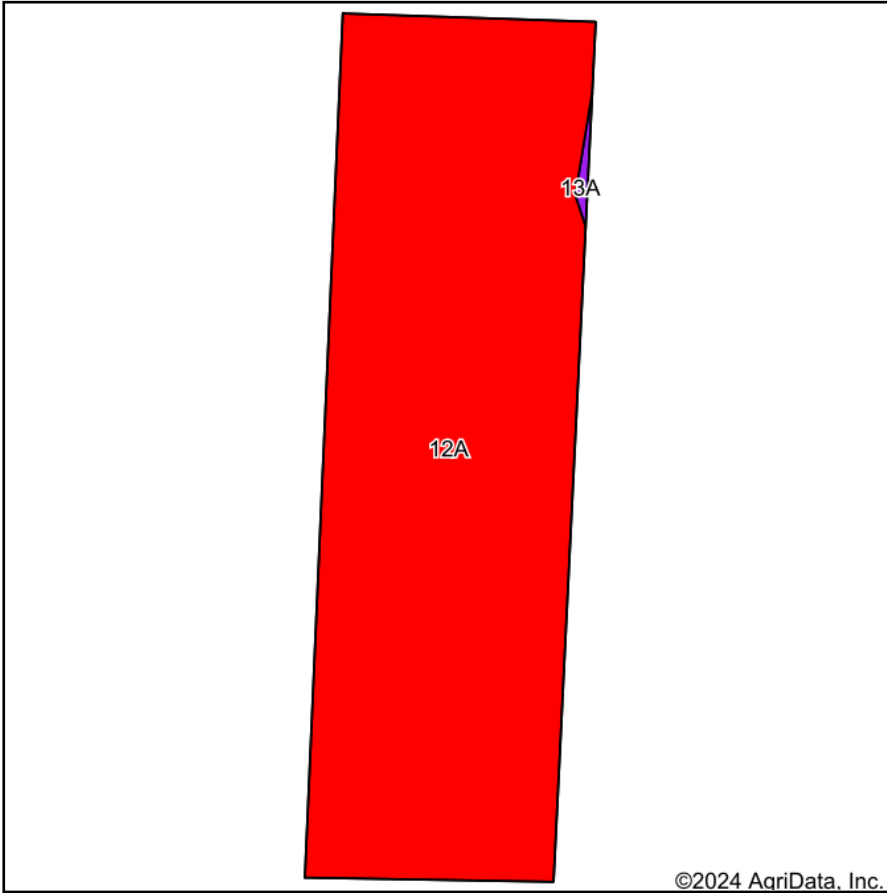
Crop yields and productivity (B811 EFOTG) are maintained at the following USDA web site: 2023 Illinois Soil Productivity and Yield Indices: <https://efotg.sc.egov.usda.gov/#/state/IL/documents/section=2&folder=52809>

** Base indexes from Bulletin 811 adjusted for slope, erosion, flooding, and surface texture according to the Il. Soils EFOTG

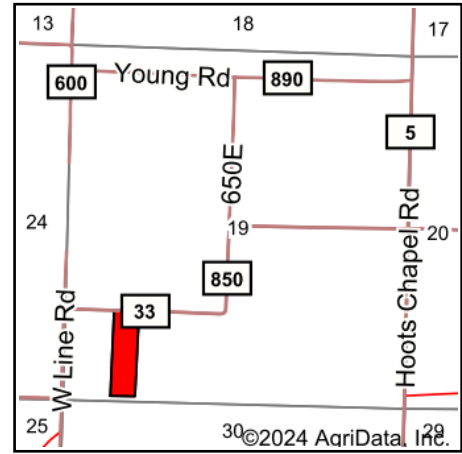
e Soils in the well drained group were not rated for grass-legume and are shown with a zero "0".

*n: The aggregation method is "Weighted Average using all components"

Soils Map



Soils data provided by USDA and NRCS.



State: **Illinois**
 County: **Marion**
 Location: **19-2N-2E**
 Township: **Salem**
 Acres: **10.98**
 Date: **12/22/2024**



Area Symbol: IL121, Soil Area Version: 21

Code	Soil Description	Acres	Percent of field	Il. State Productivity Index Legend	Corn Bu/A	Soybeans Bu/A	Wheat Bu/A	Grass-legume e hay, T/A	Crop productivity index for optimum management	*n NCCPI Soybeans
12A	Wynoose silt loam, 0 to 2 percent slopes	10.98	100.0%		128	42	51	4.30	97	49
Weighted Average					128	42	51	4.3	97	*n 49

Table: Optimum Crop Productivity Ratings for Illinois Soil EFOTG are sourced from Bulletin 811 calculated Map Unit Base Yield Indices, and adjusted (Adj) for slope, erosion, flooding, and surface texture. Publication Date: 02-08-2023

Crop yields and productivity (B811 EFOTG) are maintained at the following USDA web site: 2023 Illinois Soil Productivity and Yield Indices: <https://efotg.sc.egov.usda.gov/#/state/IL/documents/section=2&folder=52809>

** Base indexes from Bulletin 811 adjusted for slope, erosion, flooding, and surface texture according to the Il. Soils EFOTG

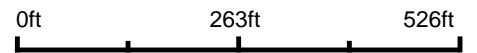
e Soils in the well drained group were not rated for grass-legume and are shown with a zero "0".

*n: The aggregation method is "Weighted Average using all components"

Topography Contours



Source: USGS 1 meter dem
Interval(ft): 2.0
Min: 529.1
Max: 534.0
Range: 4.9
Average: 531.2
Standard Deviation: 0.75 ft

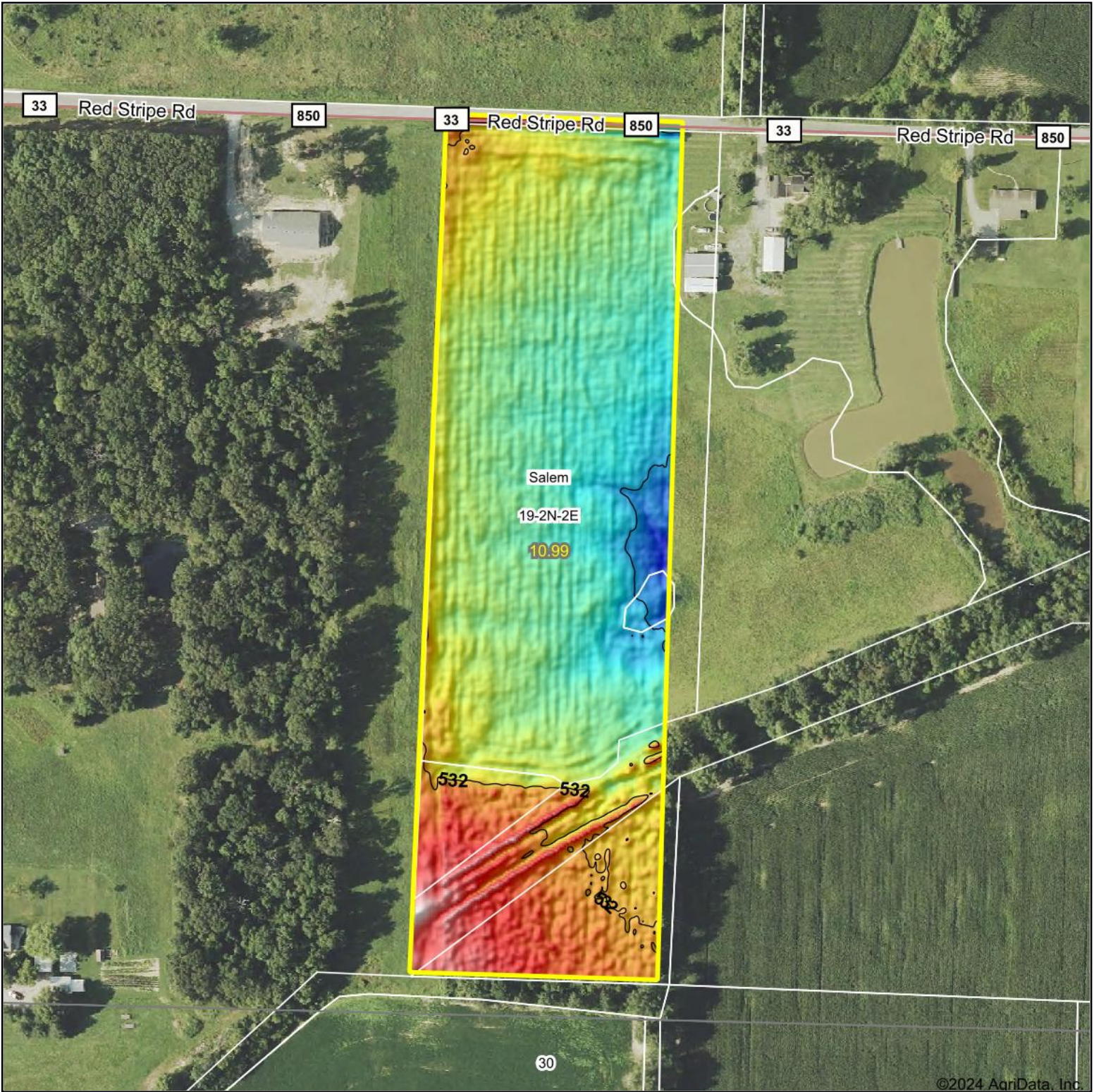


12/22/2024

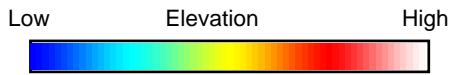
19-2N-2E
Marion County
Illinois

Boundary Center: 38° 35' 33.15, -89° 1' 42.15

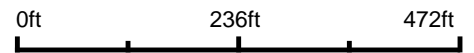
Topography Hillshade



©2024 AgriData, Inc.



Source: USGS 1 meter dem
 Interval(ft): 2
 Min: 529.2
 Max: 534.0
 Range: 4.8
 Average: 531.3
 Standard Deviation: 0.79 ft



19-2N-2E
Marion County
Illinois

Boundary Center: 38° 35' 33.06, -89° 1' 42.34



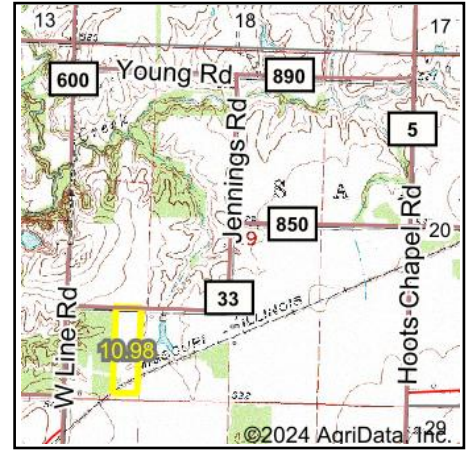
Maps Provided By:



© AgriData, Inc. 2023 www.AgriDataInc.com

Field borders provided by Farm Service Agency as of 5/21/2008.

Wetlands Map



State: Illinois
Location: 19-2N-2E
County: Marion
Township: Salem
Date: 12/22/2024



Maps Provided By:



© AgriData, Inc. 2023 www.AgriDataInc.com



0ft 383ft 765ft

Classification Code	Type	Acres
	Total Acres	0.00

Data Source: National Wetlands Inventory website. U.S. DoI, Fish and Wildlife Service, Washington, D.C. <http://www.fws.gov/wetlands/>